

# BUNDALEER

MURRAY GREYS

*'Born to Perform'*

## **2nd Production Sale**

*Thursday, 21st January 2010  
1230pm WST*



[www.bundaleerbeef.com.au](http://www.bundaleerbeef.com.au)

Sam 0427 756 936

Cliff: 0427 585 002

John Wirth  
0427 686 780



Jock Embry  
0427 426 488

**VIEW VIDEO ONLINE**  
[www.bundaleerbeef.com.au](http://www.bundaleerbeef.com.au)



## **GUARANTEE**

We guarantee all bulls to be structurally sound, fertile and capable of natural service. Bulls are guaranteed for three years from date of sale. However, should a bull prove not to be able to function as a bull and is unable to sire progeny we will;

- Replace the bull with an agreed substitute if available, or;
- Issue a credit equal to the purchase price less the salvage value of the bull.

The guarantee covers the purchase value of the bull, without interest, costs of damages. The guarantee shall apply providing the bulls incapacity is not caused by injury, misadventure or disease contracted since leaving Bundaleer. The guarantee is reduced by a third of the purchase price for each year of service from the sale date. A veterinary certificate may also be requested at the vendors discretion.

## **TRANSPORT**

Farm delivery will be offered on the following conditions:

If one bull is purchased – bull will be delivered to the purchaser's property within 250km.

If two bulls are purchased – bulls will be delivered to the purchaser's property within 500km.

If three or more bulls are purchased bulls will be delivered within 650km.

If female lots are purchased in conjunction with bulls – females will be delivered free of charge.

Regional delivery will be offered for purchasers outside these parameters—OR on a mileage basis.

For interstate purchases 10 percent of purchase price is offered.

# **BUNDALEER**

## **MURRAY GREYS**

*'Born to Perform'*

**21ST JANUARY 2010**

SALE COMMENCING AT 1230 PM

## **2ND ANNUAL PRODUCTION SALE**

**'BUNDALEER'**  
**KARRIDALE, WA**

PRE-SALE INSPECTION FROM 1030 AM

VENDOR CONTACT DETAILS

PHONE: (08) 9758 5520

FAX: (08) 9758 5002

CLIFF OWEN MOBILE: 0427 585 002

SAM OWEN MOBILE: 0427 756 936

Email: bundaleer@hotmail.com

SELLING AGENT

LANDMARK

JOCK EMBRY: 0427 426 488

JOHN WIRTH: 0427 686 780

3% REBATE TO OUTSIDE AGENTS THAT INTRODUCE BUYERS IN WRITING  
24 HOURS PRIOR TO SALE

4% REBATE TO OUTSIDE AGENTS THAT PURCHASED LOTS IN 2009 AND  
INTRODUCE BUYERS IN WRITING 24 HOURS PRIOR TO SALE

## Sale Contents

**20 MURRAY GREY BULLS**

**4 SEMEN LOTS**

**1 EMBRYO LOT**

**5 'E' HEIFERS**

**4 STUD COWS PTIC**  
(WITH CALVES AT FOOT)

**3 STUD COWS PTIC**

**3 STUD 'D' HEIFERS PTIC**

**2 STUD 'D' HEIFERS NIC**

# JOS

JOS has been registered as Bundaleer's tattoo freeze brand and fire brand .We endeavour to tattoo and freeze brand all our cattle with both JOS and their individual year number and sequential birth number. There is nothing unusual about this, however how we came to use JOS has a little family history tied to it.

Back in the 1930s my grandfather was forced to move from Wickipen through repercussions of the depression and drought. He and his wife and five children selected about 600 acres after an inspection of an abandoned dairy farm with a friend [Hubert Macdonald]. Hubert had taken him straight to permanent water. My grand father said "this will do", water no longer presented the problems it had done in the wheat belt. Portion of this early selection is now the home block for Bundaleer.

He registered the brand J for Joseph, 0 for the numeral, S for Spackman. This brand was taken up by his daughter on his death and remained with her for many years after she stopped farming. In the mean time Bundaleer had commenced with its registered brand which had in it a lazy "R", the computers couldn't handle this and we were asked to find another brand.

Meanwhile my aunty had moved into frail aged accommodation. I thought it "might be nice" if I could continue on with *The Family Tattoo*, I approached her with this in mind, tears welled up in her eyes and in a choked voice she replied "would you". "Yes" was my obvious reply, she came back "you've made me very happy"

A sentimental yarn!!!! yes!!! my grandkids like it.

At Bundaleer we have been performance recording since 1985. The majority of the bulls and heifers in the sale have been run under identical conditions since weaning, thus, it is possible to compare animals from within the same management group. This can be useful when accuracy of EBV accuracies are low or trying to compare maturity pattern and phenotype.

The concept of group Breedplan is to eliminate environmental differences, thus enabling unbiased comparison of individual animals.

### *First things first*

Decide on **YOUR** breeding requirements and determine which economic attributes are necessary to achieve this aim. Then determine which EBVs traits and characteristics most suit these objectives. EBVs offer a series of lineal selection traits and need to be used in conjunction with sound breeding practices.

**Birth Weight & Calving Ease:** Size of calf is directly associated with calving difficulty. In general, very high birth weight bulls will have more calving difficulty than low birth weight bulls.

**Growth:** The best single estimate of an animal's genetic merit at varying degrees of maturity, i.e. 200 days, 400 days, 600 days and maturity (Mature Cow Weight {MCW}).

**Carcase:** Provides an array of lineal carcass data incorporating weight, muscle and fat.

**Fertility:** A measure of puberty and reproductive propensity.

## SALE INFORMATION

**INSPECTION:** Welcomed from 10.00am on sale day or prior to sale by appointment.

**REBATE:** Three percent (3%) on all lots to outside agents nominating buyers in writing 24 hours prior to sale. Fax: 08 9758 5002 or email: bundaleer@hotmail.com Four percent (4%) will be offered to outside agents that nominate buyers 24 hours prior to sale and purchased lots in 2009.

**BUYER'S INSTRUCTION SLIP:** Must be completed by all successful purchasers and registered with selling agent.

**TRANSPORT:** Bundaleer will offer generous transport — farm delivery (see inside cover)

**TRANSFERS:** All registered lots will be transferred free of charge at the request of the purchaser.

**HEALTH:** All lots are guaranteed to be free from *tuberculosis* (TB), *brucellosis*, *mannosidosis* and Johnes Disease. All cattle contained in this catalogue are eligible for entry into all herds within Australia—subject to interstate health tests). All bulls have been vaccinated for vibriosis, and all lots older than twelve months have given copper, cobalt and selenium as well as being drenched for internal and external parasites.

**GUARANTEE:** All bulls offered for sale are guaranteed for a period of three years for genetic related faults. A selection of 'heifer bulls' have guarantees on calving ease. (See inside cover for details)

**BULLS:** All bulls will be scanned and weighed prior to sale and raw data will be provided on sale day. All bulls have passed a semen quality control and associated fertility assessment. All bulls are deemed fit for natural service. For lots where semen is intended to be collected semen morphology results are available on request.

**NEW STOCK:** Cattle are herd animals and as such isolation can produce anxiety. So we suggest company for your new purchase will be a great help in allowing your new animal to settle in.

**ACCOMODATION:** There is a good range of accommodation available within 30 minutes of Bundaleer. Ring Margaret River Tourist Bureau Ph: (08) 9780 5911 or go to [www.margaretriver.com](http://www.margaretriver.com)

## BUNDALEER '2010'

*'A tough year'*

Buoyed by the success of our inaugural sale in 2009 and challenged by the season we commenced the 2010 sale preparation well behind where we were "at" this time last year. On average the bulls were some 80-100 kg lighter than last year, the fact that they have responded so well to their sale preparation speaks volumes for their genetic and phenotypic make up and the balanced diet provided by Peter and Mark at Semini Enterprises Pty. Ltd.

The bulls in general have very acceptable birth weights with high 400 Day Growth, EMA, Milk and RBY. We consider that our focus on these traits are essential for Western Australian beef production. Sires this year include our two feature sire from last year Cash Flow and Power Play. Due to injury this will be the last year that sons by Bundaleer Power Play A2 will be sold. We have been very satisfied with these two bulls and their ability to consistently reproduce cattle that meet our breeding objective. New sire, True Blue has certainly made and impact with several sons in the sale worthy of a look. In 2009 we introduced four new sires to the stud, each one offering our breeding program greater depth and we look forward to offering a selection of their progeny in 2011.

Females have responded well since the grass started growing late September. We would like to see some of these cattle with more condition; however we believe that these cattle give the purchaser an excellent opportunity to procure a cross section of our genetics. There are some excellent females in our 2010 line up and we are very confident about their ability to perform.

We would also like to draw your attention to the genetics of the embryo and semen packages offered. Bundaleer Joyce will be getting flushed in 2010 and we consider her to be not only one of our top females but one of the top females of the breed. This is evident in her performance over the past five years as the dominant female in the breed for growth during this period; additionally she is very high in Milk and EMA—a female that sums up our breeding program.

Additionally we will offer semen from Monterey Freight Train and Bundaleer Big Bang two sires that we believe will have an impact on the breed over the next five years.

We welcome you all to our second sale and invite you to our hospitality before and after the sale. For those that have decided to travel to the sale we hope you are able to enjoy a couple of days in the Margaret River region, it an excellent place to unwind after 2009. For those unable to attend we will endeavour to get a video of each lot online to aid in your decision process.

We sincerely thank all our volunteers who have helped bring this sale together. Thank you for your time and all the very best for 2010.

Cliff & Penny Owen and Sam & Amy Owen.



At Landmark, you can rely on a well network of (vet and) advisors who have the resources and the expertise for all your livestock needs. Our continual experience and our knowledge of the livestock industry means we can add real value to your business and help you make the most of every opportunity. We understand the buying and selling of these and other cattle, and with access to prime domestic markets and international partnerships, we can work better prices for you. That's why most Australian farmers look to us.

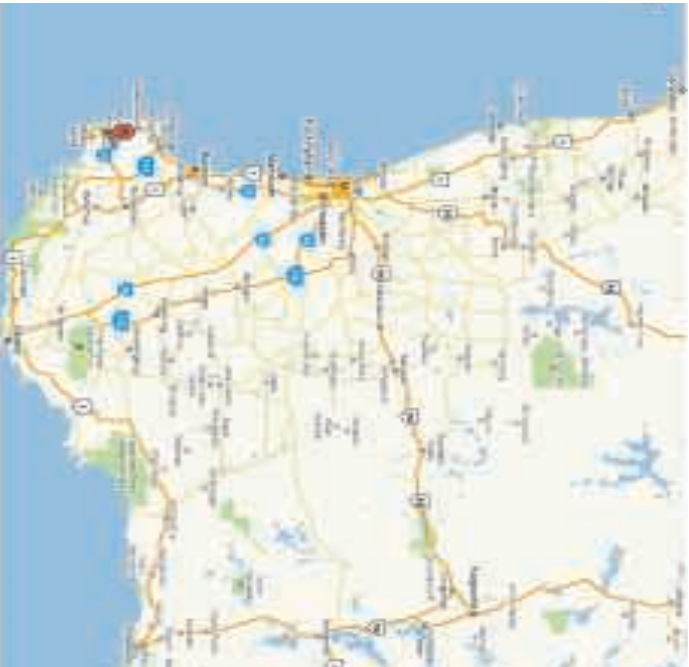
Jack Boney	Margaret River	08177 436 388
Cliff Waddington	Cash/Emmabook/Darwin	0806 915 831
David Horrib	Cash/Emmabook/Darwin	0818 831 831
Cliff Borden	Wooli/Boss	0827 863 886
Lania Shortland	Woolamai/Kerang	0828 548 388
Simon Mills	Wooli/Boss	0806 081 546
Ear Cooper	Bridgman/Willemat	0828 499 498
Wayne Harty	Busselton	0827 567 307
Matt Makaly	Manaring	0828 881 795
Tony Horrib	Woolamai	0828 211 152
Bob Pumphrey	Albany	0828 428 320
Michael Lynch	Albany	0828 483 227
Gary Brown	Middleton	0828 442 344
Prerian Clarke	Good Stock/Margaret/Mullewa	0828 157 225
John Withy	Good Stock/Mullewa	0827 414 225
Bethan King	Good Stock/Specialist/Albany	0828 881 782

landmark.com.au

LANDMARK

With a commitment to the highest standards of service, we are here to help you.

*GETTING HERE*



## REFERENCE SIRE BUNDALEER CASH FLOW Y6 (PB)

Born: 03/05/2003  
Tattoo: JOS Y6  
Colour: Silver MG% : 87.5

BW: 34kg  
200day: 322kg (Actual: 123d: 316kg)  
400day: kg (Actual: )  
600day: 748kg (Actual: 694d: 860kg)  
Mature Weight: 1100kg (approximate)  
Hip Height: 145cm (mature)  
Frame Score: 6



V D A R NEW TREND 315 (GR) (B)  
WILLALOOKA RAMSAY (GR)  
WILLALOOKA AGNES K207 (PB)  
S: **WILLALOOKA MAIN BREAK V856 (PB)**  
WILLALOOKA P19 (GR)  
WILLALOOKA S695 (GR)  
WILLALOOKA AM Q678 (PB)

MONTEREY CENTURY TW (PB)  
MONTEREY SHLOH (PB)  
MONTEREY MAGNOLIA 3RD (PB)  
D: **BUNDALEER MELISSA W16 (PB)**  
LOCHABER-BRAES DIPLOMAT (PB)  
KOOJAN HILL MELISSA N26 (PB)  
KOOJAN HILL MELISSA 734 (PB)

	Calving				Growth & Maternal					Fertility	
	Calv. Ease Direct	Calv. Ease Dtrs	Gest. Len. (days)	Birth Wt. (kg)	200 Day Wt. (kg)	400 Day Wt. (kg)	600 Day Wt. (kg)	Mat. Cow Wt. (kg)	Milk (kg)	Scrot. Size (cm)	Days to Calv.
	(%)	(%)	(days)	(kg)	(kg)	(kg)	(kg)	(kg)	(kg)	(cm)	
EBV	-4.0	-1.7	-1.8	+3.6	+28	+38	+52	+40	+4	+1.0	-0.2
ACC.	53%	41%	58%	88%	82%	78%	82%	70%	45%	73%	37%

	300 KG Carcase						\$ Index		
	Carcase Wt. (kg)	Eye Muscle Area (cm <sup>2</sup> )	Rib Fat (mm)	Rump Fat (mm)	Retail Beef Yield (%)	IMF %	Long Fed Export (\$)	Super market (\$)	Heavy Grass Fed (\$)
	(kg)	(cm <sup>2</sup> )	(mm)	(mm)	(%)	%	(\$)	(\$)	(\$)
EBV	+ 32	+ 1.7	-1.3	-1.8	+ 0.8	-0.4	+\$ 31	+\$ 36	+\$ 38
ACC.	69%	54%	67%	67%	62%	60%			

Notes: Cash Flow is a tremendously thick, long bodied bull that has very good figures. Primarily he has 200 & 400 Day Growth in the top 10-15% of the breed with Mature Cow Weight around breed average. This means calf sale weights are heavier without increasing the mature size of the cow. His Gestation Length, Scrotal Size, Carcase Weight and Eye Muscle Area and all in the top 10-15% of the breed. His daughters are developing into thick butted wedge shaped females that are quiet with excellent udders. Progeny lots: 1, 2, 8, 17, 18 and 30 Calf at foot lot: 35. Joining Lot: 34

## REFERENCE SIRE BUNDALEER POWER PLAY A2 (PB)

Born: 02/02/2005  
Tattoo: JOS A2  
Colour: Silver MG% : 100

BW: 42kg  
200day: 272kg (Actual: 269d: 408kg)  
400day: kg  
600day: 552kg (Actual: 626d: 618kg)  
Mature Weight: 1050kg (approximate)  
Hip Height: 143cm (mature)  
Frame Score: 5.5  
Scrotal Size: 40cm (18 months)



GLEN-MOAN JACKLL (PB)  
SPRINGWELL JAGUAR L138 (PB)  
SPRINGWELL REQUIEM 898 (PB)  
S: **SPRINGWELL TRUMP CARD T58 (PB)**  
ORCADIA PARK SYNDICATE (PB)  
SPRINGWELL DAVNA N95 (PB)  
RANGITOTO DAIYA 677 (PB)

LOCHABER-BRAES DIPLOMAT (PB)  
BUNDALEER MAX M33 (PB)  
THE FAVOURITE FREDERIKA IMP NZ (GR)  
D: **BUNDALEER DAVINA Q48 (PB)**  
BUNDALEER DOUGLAS 155 (PB)  
BUNDALEER DAVINA 201 (PB)  
BUNDALEER DAVINA 166 (PB)

	Calving				Growth & Maternal					Fertility	
	Calv. Ease Direct	Calv. Ease Dtrs	Gest. Len. (days)	Birth Wt. (kg)	200 Day Wt. (kg)	400 Day Wt. (kg)	600 Day Wt. (kg)	Mat. Cow Wt. (kg)	Milk (kg)	Scrot. Size (cm)	Days to Calv.
	(%)	(%)	(days)	(kg)	(kg)	(kg)	(kg)	(kg)	(kg)	(cm)	
EBV	-1.2	+1.4	+1.8	+3.0	+17	+25	+39	+47	-8	+1.7	-1.3
ACC.	56%	45%	60%	83%	76%	72%	77%	67%	57%	67%	41%

	300 KG Carcase						\$ Index		
	Carcase Wt. (kg)	Eye Muscle Area (cm <sup>2</sup> )	Rib Fat (mm)	Rump Fat (mm)	Retail Beef Yield (%)	IMF %	Long Fed Export (\$)	Super market (\$)	Heavy Grass Fed (\$)
	(kg)	(cm <sup>2</sup> )	(mm)	(mm)	(%)	%	(\$)	(\$)	(\$)
EBV	+ 24	+ 1.1	-0.2	-0.3	+ 0.8	-0.1	+\$ 26	+\$ 29	+\$ 36
ACC.	66%	53%	66%	66%	61%	58%			

Notes: Power Play is a moderate framed bull with superb structure and constitution. Power Play's calves have hit the mark with the Willalooka Mainbreak daughters, evident at the 2008 PRS winning Grand Champion Female, Junior Champion Female, Reserve Junior Champion Female, Progeny group and Most Successful Exhibitor. They backed this up again at Margaret River in a much large field of Inter-breed cattle winning Summit Fertilizer Classic Pair, along with Reserve Intermediate Champion heifer and Reserve Junior Heifers. Additionally he is one of a handful of bulls in the breed with 8/8 alleles for tenderness - if you are targeting MSA specs then tenderness, temperament, muscle and fat are the way forward - Power Play ticks all the boxes. Progeny lots: 3, 4, 7, 10, 14, 20, 27, 37 and 38 Calf at foot lot: 30

**REFERENCE SIRE**

**BUNDALEER BACKLINE B31 (PB)**

Born: 03/04/2006  
Tattoo: JOS B31  
Colour: Grey MG % : 100

Picture taken at 10 months

Weight:  
Frame Score:  
Scrotal:



MONTEREY CENTURY TW (PB)  
MONTEREY SHILOH (PB)  
MONTEREY MAGNOLIA 3RD (PB)  
**S: BUNDALEER WORLD CLASS W18 (PB)**  
BUNDALEER KING 71 (PB)  
BUNDALEER OPAL P4 (PB)  
BUNDALEER OPAL L25 (PB)

BUNDALEER KING 71 (PB)  
BUNDALEER PROPHET P2 (PB)  
KOOJAN HILL OPAL 3RD (PB)  
**D: BUNDALEER ROWAN R27 (PB)**  
BOOBYALLA DISCOVERY (PB)  
KOOJAN HILL ROWAN M26 (PB)  
KOOJAN HILL ROWAN 781 (PB)

	Calving				Growth & Maternal					Fertility	
	Calv. Ease Direct	Calv. Ease Dtrs (%)	Gest. Len. (days)	Birth Wt. (kg)	200 Day Wt. (kg)	400 Day Wt. (kg)	600 Day Wt. (kg)	Mat. Cow Wt. (kg)	Milk (kg)	Scrot. Size (cm)	Days to Calv.
	(%)	(%)	(days)	(kg)	(kg)	(kg)	(kg)	(kg)	(kg)	(cm)	
EBV	-10.1	-0.6	-0.5	+8.2	+40	+57	+76	+64	+2	+0.3	-
ACC.	41%	36%	50%	77%	65%	61%	63%	55%	48%	51%	-

	300 KG Carcase						\$ Index		
	Carcase Wt. (kg)	Eye Muscle Area (cm <sup>2</sup> )	Rib Fat (mm)	Rump Fat (mm)	Retail Beef Yield (%)	IMF %	Long Fed Export (\$)	Super market (\$)	Heavy Grass Fed (\$)
	(kg)	(cm <sup>2</sup> )	(mm)	(mm)	(%)	%	(\$)	(\$)	(\$)
EBV	+42	+1.4	-0.2	-0.2	+1.0	-0.2	+\$28	+\$40	+\$44
ACC.	50%	37%	44%	44%	41%	36%			

Notes: Backline is a bull with huge performance - muscle, capacity and doing ability. Low to moderate birth weight compared to Euro bulls. Structurally very sound, thick top-line and plenty of width over the rump. Out of a past trailleader and top-ten female, he has a very good son and daughter in the sale. Progeny lots: 5 and 39

**REFERENCE SIRE**

**BUNDALEER TRUE BLUE A68 (PB)**

Born: 27/07/2005  
Tattoo: JOS A68  
Colour: Silver MG % : 100

BW: 44kg  
200day: 272kg (Actual: 123d: 316kg)  
400day: 716kg (Actual: 480d: 848kg)  
600day: 552kg (Actual: 626d: 618kg)  
Mature Weight: 1250kg (approximate)  
Hip Height: 155cm (mature)  
Frame Score: 8  
Scrotal Size: 41cm (16 months)



WILLALOOKA RAMSAY (GR)  
WILLALOOKA MAIN BREAK V856 (PB)  
WILLALOOKA S695 (GR)  
**S: BUNDALEER CASH FLOW Y6 (PB)**  
MONTEREY SHILOH (PB)  
BUNDALEER MELISSA W16 (PB)  
KOOJAN HILL MELISSA N26 (PB)

BUNDALEER MAX M33 (PB)  
BUNDALEER PAYDAY P43 (PB)  
BUNDALEER DIANNA M04 (PB)  
**D: BUNDALEER REMEMBRANCE DAY (PB)**  
BUNDALEER KING 71 (PB)  
BUNDALEER OPAL P4 (PB)  
BUNDALEER OPAL L25 (PB)

	Calving				Growth & Maternal					Fertility	
	Calv. Ease Direct	Calv. Ease Dtrs (%)	Gest. Len. (days)	Birth Wt. (kg)	200 Day Wt. (kg)	400 Day Wt. (kg)	600 Day Wt. (kg)	Mat. Cow Wt. (kg)	Milk (kg)	Scrot. Size (cm)	Days to Calv.
	(%)	(%)	(days)	(kg)	(kg)	(kg)	(kg)	(kg)	(kg)	(cm)	
EBV	-9.0	-1.5	-1.5	+4.9	+30	+42	+60	+50	+4	-0.1	-
ACC.	47%	36%	52%	82%	73%	67%	72%	61%	40%	62%	-

	300 KG Carcase						\$ Index		
	Carcase Wt. (kg)	Eye Muscle Area (cm <sup>2</sup> )	Rib Fat (mm)	Rump Fat (mm)	Retail Beef Yield (%)	IMF %	Long Fed Export (\$)	Super market (\$)	Heavy Grass Fed (\$)
	(kg)	(cm <sup>2</sup> )	(mm)	(mm)	(%)	%	(\$)	(\$)	(\$)
EBV	+35	+1.3	-1.1	-1.6	+1.6	-0.2	+\$20	+\$30	+\$28
ACC.	57%	44%	55%	54%	50%	47%			

Notes: A large bull with a colossal eye muscle area. (140cm at 17mths). He remains the fastest growth bull we have had on the property (848kg at 480 days). We are excited about his first crop of calves - they are displaying extra length, weight and have excellent muscling down the spine. Progeny lots: 6, 9, 11, 12, 13, 15, 40 and 41

**REFERENCE SIRE**

**BUNDALEER B.B. KING B4 (BF)**

Born: 01/03/2006  
 Tattoo: JOS B4  
 Colour: Black MG% : 75

BW: 44kg  
 200day:  
 400day: 444kg (Actual: 488d: 532kg)  
 600day: 644kg (Actual: 608d: 634kg)  
 Mature Weight: 1250kg (approximate)  
 Hip Height: 151cm (mature)  
 Frame Score: 7.2



MONTEREY SHILOH (PB)  
 BUNDALEER UNCLE SAM U18 (PB)  
 BUNDALEER LOLITA P6 (PB)  
 S: **BUNDALEER X ROAD X37 (PB)**  
 BUNDALEER PAYDAY P43 (PB)  
 BUNDALEER REMEMBRANCE DAY (PB)  
 BUNDALEER OPAL P4 (PB)

MONTEREY SHILOH (PB)  
 BUNDALEER VOLCANO V15 (PB)  
 BUNDALEER ROWAN R27 (PB)  
 D: **BUNDALEER EBONY X16 TW (GR)**  
 BROST TRUMP (GR) (B)  
 WHISPERING PINES R83 (GR) (B)  
 WHISPERING PINES L55 (GR) (B)

	Calving				Growth & Maternal				Fertility		
	Calv. Ease Direct	Calv. Ease Dtrs	Gest. Len. (days)	Birth Wt. (kg)	200 Day Wt. (kg)	400 Day Wt. (kg)	600 Day Wt. (kg)	Mat. Cow Wt. (kg)	Milk (kg)	Scrot. Size (cm)	Days to Calv.
	(%)	(%)	(days)	(kg)	(kg)	(kg)	(kg)	(kg)	(kg)	(cm)	
EBV	-8.9	-	-1.4	+5.6	+33	+55	+80	+81	+4	-0.1	-
ACC.	39%	-	50%	77%	67%	69%	70%	57%	37%	69%	-

	300 KG Carcase						\$ Index		
	Carcase Wt.	Eye Muscle Area	Rib Fat	Rump Fat	Retail Beef Yield	IMF %	Long Fed Export	Super market	Heavy Grass Fed
	(kg)	(cm <sup>2</sup> )	(mm)	(mm)	(%)	%	(\$)	(\$)	(\$)
EBV	+ 49	+ 2.2	-2.4	-3.3	+ 2.7	-0.5	+\$ 28	+\$ 43	+\$ 40
ACC.	58%	47%	57%	57%	52%	44%			

Notes: One of the thickest black bulls in the state with performance to match - the grunt many black bulls lack! A mountain of a bull, however, he is surprisingly smooth over the shoulders, has a strong topline and excellent feet and legs, all attributes that large bulls struggle to keep together. His dam is milky and deep bodied and his sire needs little introduction, BB King is a bull that offers the domestic market plenty. Joining lot: 32

**REFERENCE SIRE**

**MELALEUCA CHASER C267 (CM)**

Born: 04/04/2007  
 Tattoo: MCA C267  
 Colour: Silver MG% : 87.5



ORCADIA PARK CENTURY (PB)  
 WARROOK HASSETT Q10 (PB)  
 WARROOK BETTY L31 (PB)  
 S: **WOODBOURN W77 (CM)**  
 ABBARINGA NAPOLEON N12 (CM)  
 WOODBOURN ALICE S102 (CM)  
 WOODBOURN MISS ALICE N54 (GR) (B)

MONTEREY STAR CHIEF (PB)  
 MONTEREY STAR SHINE (PB)  
 MONTEREY MISS BRANDY Q84 (PB)  
 D: **MELALEUCA ESBAY X167 (PB)**  
 SPRINGWELL MATADORM38 (PB)  
 MELALEUCA ESBAY S51 (PB)  
 SPRINGWELL ESBAY J135 (PB)

	Calving				Growth & Maternal				Fertility		
	Calv. Ease Direct	Calv. Ease Dtrs	Gest. Len. (days)	Birth Wt. (kg)	200 Day Wt. (kg)	400 Day Wt. (kg)	600 Day Wt. (kg)	Mat. Cow Wt. (kg)	Milk (kg)	Scrot. Size (cm)	Days to Calv.
	(%)	(%)	(days)	(kg)	(kg)	(kg)	(kg)	(kg)	(kg)	(cm)	
EBV	+2.2	-6.7	-	+3.0	+18	+36	+53	+58	+7	+1.5	-
ACC.	39%	37%	-	62%	68%	64%	64%	54%	53%	51%	-

	300 KG Carcase						\$ Index		
	Carcase Wt.	Eye Muscle Area	Rib Fat	Rump Fat	Retail Beef Yield	IMF %	Long Fed Export	Super market	Heavy Grass Fed
	(kg)	(cm <sup>2</sup> )	(mm)	(mm)	(%)	%	(\$)	(\$)	(\$)
EBV	+ 33	+ 1.2	-1.1	-1.6	+ 1.4	-0.2	+\$ 34	+\$ 40	+\$ 44
ACC.	56%	44%	53%	52%	49%	46%			

Notes: Chaser is one of our newest sires to join the Bundaleer sire team. He is a well balanced bull that has good neck extension, smooth shoulders and an impressive set of figures for heifer joining.

**REFERENCE SIRE**

**BUNDALEER BOMBER B12 (PB)**

Born: 19/03/2006  
Tattoo: JOS B12  
Colour: Grey MG% : 87.5

Picture: Willabooka Unity U99 (PB)

BW: 41kg  
200day: kg (Actual: 280d: 342kg)  
400day: kg (Actual: 470d: 436kg)  
600day: kg (Actual: 608d: 634kg)  
Mature Weight: 1150kg (approximate)  
Hip Height: 147cm (mature)  
Frame Score: 6.4



WILLALOOKA LEOPOLD L192 (PB)  
WILLALOOKA PHARAOH P47 (PB)  
WILLALOOKA CATHERINE M171 (PB)  
S: **WILLALOOKA UNITY U99 (PB)**  
VICTOREE SCOTCHCAP (GR) (B)  
WILLALOOKA ANNETTE R74 (GR)  
WILLALOOKA ANNETTE 2440 (PB)

THE GLEN SANDBOY (PB)  
MONTEREY MAJESTIC (PB)  
WANDENA NELLA (PB)  
D: **BUNDALEER TT 29 (PB)**  
BUNDALEER PROPHET P2 (PB)  
BUNDALEER T.T. R28 (PB)  
BUNDALEER LOLITA N29 (PB)

	Calving				Growth & Maternal					Fertility	
	Calv. Ease Direct	Calv. Ease Dtrs	Gest. Len.	Birth Wt.	200 Day Wt.	400 Day Wt.	600 Day Wt.	Mat. Cow Wt.	Milk (kg)	Scrot. Size (cm)	Days to Calv.
	(%)	(%)	(days)	(kg)	(kg)	(kg)	(kg)	(kg)	(kg)	(cm)	
EBV	-2.2	+2.8	-0.8	+3.5	+28	+43	+59	+61	+3	+0.5	-
ACC.	46%	39%	57%	75%	69%	65%	66%	57%	50%	53%	-

	300 KG Carcase					\$ Index			
	Carcase Wt.	Eye Muscle Area	Rib Fat	Rump Fat	Retail Beef Yield	IMF %	Long Fed Export (\$)	Super market (\$)	Heavy Grass Fed (\$)
	(kg)	(cm <sup>2</sup> )	(mm)	(mm)	(%)	%	(\$)	(\$)	(\$)
EBV	+ 39	+ 2.0	-0.4	-0.6	+ 2.0	+ 0.5	+\$ 48	+\$ 48	+\$ 53
ACC.	55%	44%	53%	53%	50%	47%			

Notes: A dynamic outcross sire that has a superb set of figures, he combines, calving-and-growth and carcase-and-milk; cornerstone traits of beef production. The combination of these traits is usually mutually exclusive, not here. Progeny lot: 19.

**REFERENCE SIRE**

**ABROLIS GREYS AMBROSE ET (PB)**

Born: 10/02/2005  
Tattoo: WY3 A3  
Colour: Silver MG% : 100

Mature Wt. approx: 1100kg  
Frame Score: 6  
Scrotal:

MONTEREY MAJESTIC (PB)  
MONTEREY MAJESTIC LAD (PB)  
ORCADIA PARK SAPPHIRE 1086 (PB)  
S: **MONTEREY MILLENNIUM (PB)**  
ORCADIA PARK SYNDICATE (PB)  
MONTEREY MAGNOLIA 2ND (PB)  
MONTEREY MAGNOLIA (PB)

MONTEREY MOMENTUM 2ND (PB)  
MONTEREY TREMENDOUS (PB)  
MONTEREY VERONICA M22 (PB)  
D: **ABROLIS GREYS MISS TREMENDOUS ET (PB)**  
MONTEREY STAR CHIEF (PB)  
MONTEREY MISS MADONNA (PB)  
MONTEREY MADONNA 2ND (PB)

	Calving				Growth & Maternal					Fertility	
	Calv. Ease Direct	Calv. Ease Dtrs	Gest. Len.	Birth Wt.	200 Day Wt.	400 Day Wt.	600 Day Wt.	Mat. Cow Wt.	Milk (kg)	Scrot. Size (cm)	Days to Calv.
	(%)	(%)	(days)	(kg)	(kg)	(kg)	(kg)	(kg)	(kg)	(cm)	
EBV	-5.9	-3.5	+1.2	+6.2	+30	+46	+63	+56	+4	+2.2	-3.5
ACC.	52%	47%	58%	75%	69%	67%	70%	62%	57%	55%	39%

	300 KG Carcase					\$ Index			
	Carcase Wt.	Eye Muscle Area	Rib Fat	Rump Fat	Retail Beef Yield	IMF %	Long Fed Export (\$)	Super market (\$)	Heavy Grass Fed (\$)
	(kg)	(cm <sup>2</sup> )	(mm)	(mm)	(%)	%	(\$)	(\$)	(\$)
EBV	+ 35	+ 1.6	+ 0.1	+ 0.1	+ 0.9	+ 0.0	+\$ 35	+\$ 41	+\$ 49
ACC.	60%	48%	55%	55%	52%	48%			

Notes: One of those bulls that has bred beyond himself. Progeny have calved unassisted and have capacity and plenty of early growth. On paper he has positive figures from left to right. 2-600 Day Growth, Scrotal, D2C, and EMA all in the top 5%. A quite achiever that has earned his place. Progeny lots: 26 and 34

## REFERENCE SIRE BUNDALEER BIG BANG B5 (PB)

Born: 08/03/2006  
Tattoo: JOS B5  
Colour: Silver MG% : 100



BW: 42kg  
200day:  
400day: 422kg (Actual: 481d: 498kg)  
600day: 630kg (Actual: 619d: 650kg)  
Mature Weight: 1300kg (approximate)  
Hip Height: 155cm (mature)  
Frame Score: 8

WILLALOOKA LEOPOLD L192 (PB)  
WILLALOOKA PHARAOH P47 (PB)  
WILLALOOKA CATHERINE M171 (PB)  
S: **MONTEREY STRATOSPHERE ET (PB)**  
MONTEREY TREMENDOUS (PB)  
MONTEREY MISS MAGNOLIA S90 (PB)  
MONTEREY MAGNOLIA 3RD (PB)

NEWFIELDS VO ROUGE MP NZ(GR)  
KOOJAN HILL JACK POT N21 (PB)  
KOOJAN HILL KURI 704 (PB)  
D: **MONTEREY MEGAN (PB)**  
LOCHABER-BRAES DIPLOMAT (PB)  
BUNDALEER MEGAN M34 (PB)  
THE FAVOURITE FREDERIKA IMP NZ(GR)

	Calving				Growth & Maternal					Fertility	
	Calv. Ease Direct	Calv. Ease Dtrs	Gest. Len.	Birth Wt.	200 Day Wt.	400 Day Wt.	600 Day Wt.	Mat. Cow Wt.	Milk (kg)	Scrot. Size (cm)	Days to Calv.
	(%)	(%)	(days)	(kg)	(kg)	(kg)	(kg)	(kg)	(cm)		
EBV	-1.7	-0.9	-2.2	+3.5	+28	+44	+60	+61	+3	+0.2	-
ACC.	43%	38%	62%	78%	70%	71%	72%	61%	46%	72%	-

	300 KG Carcass						\$ Index		
	Carcass Wt.	Eye Muscle Area	Rib Fat	Rump Fat	Retail Beef Yield	IMF %	Long Fed Export	Super market	Heavy Grass Fed
	(kg)	(cm <sup>2</sup> )	(mm)	(mm)	(%)	%	(\$)	(\$)	(\$)
EBV	+42	+3.0	-0.8	-1.1	+2.2	-0.5	+\$39	+\$47	+\$52
ACC.	61%	51%	58%	58%	54%	47%			

Notes: Big Bang represents a blend of moderate birth, rapid growth and an overall capacity. His dam is a magnificent female, and we are delighted to have these genetics back in the herd. Lew and Rowan Smit regarded Jackpot as one of the top sires they had produced. Additionally, Gary Buller from the Monterey Murray Grey Stud considers Stratosphere one of the top sire's they have bred. Big Bang has been used over our first calvers and we are excited about his first crop of calves. Semen lots: 21 and 22

## REFERENCE SIRE MONTEREY FREIGHT TRAIN B275 TW

Born: 26/11/2006  
Tattoo: GJB B275  
Colour: Silver MG% : 100  
Pictures: B275 right and lower left  
Top Left: Dam at 18 years



Mature Wt approx: 1150kg  
Frame Score: 6  
Scrotal: 36cm

BUNDALEER NOMINATOR N37 (PB)  
MONTEREY SUNDOWNER (PB)  
ELANI PIXIE (PB)  
S: **MONTEREY FREIGHT TRAIN (PB)**  
BUNDALEER LLETAL L28 (PB)  
BUNDALEER OPAL P27 (PB)  
BUNDALEER OPAL 64 (PB)

ORCADIA PARK CENTURY (PB)  
ORCADIA PARK SYNDICATE (PB)  
ORCADIA PARK SAPPHIRE 2ND (PB)  
D: **MONTEREY MELANIE (PB)**  
CADELLA PARK LONGFELLA (PB)  
WANDENA QUIT (PB)  
WANDENA CELOSIA (PB)

	Calving				Growth & Maternal					Fertility	
	Calv. Ease Direct	Calv. Ease Dtrs	Gest. Len.	Birth Wt.	200 Day Wt.	400 Day Wt.	600 Day Wt.	Mat. Cow Wt.	Milk (kg)	Scrot. Size (cm)	Days to Calv.
	(%)	(%)	(days)	(kg)	(kg)	(kg)	(kg)	(kg)	(kg)	(cm)	
EBV	-3.3	-0.6	-	+5.0	+29	+45	+57	-	+6	-	-
ACC.	41%	35%	-	61%	56%	55%	55%	-	50%	-	-

	300 KG Carcass						\$ Index		
	Carcass Wt.	Eye Muscle Area	Rib Fat	Rump Fat	Retail Beef Yield	IMF %	Long Fed Export	Super market	Heavy Grass Fed
	(kg)	(cm <sup>2</sup> )	(mm)	(mm)	(%)	%	(\$)	(\$)	(\$)
EBV	-	+2.0	-0.7	-1	+1.6	-0.4	+\$31	+\$40	+\$43
ACC.	-	38%	42%	42%	40%	36%			

Notes: Long standing Stud Stock Auctioneer John Wirth from Landmark considered him pick of the 80 Murray Grey bulls offered by Monterey and Tullibardine in 2009. Described by Gary Buller as "a very impressive, well built bull with terrific volume and muscle development. Both his sire and dam are highly productive animals and his dam is still breeding at 18 yrs. Will grow into a big bull with huge volume".

We believe Freight Train will complement our breeding program where he will be used for his type, constitution, longevity and performance. Additionally, Mid-Parent Breeding Values suggest scrotal size will settle in top 10 percent of breed. We consider he will have the propensity to fulfil our breeding objective, that is, to produce bulls that are frame score 5-7, 'B' muscled and have an easy doing constitution. Joining lot: 30 Two straws offered with lots: 31,40 and 41 Semen lots: 23 and 24

**LOT 1**

**BUNDALEER DEIFY D8 (PB)**

Born: 08/04/2008 Age: 21.4 months  
 Tattoo: JOS D8  
 Colour: Silver MG% : 100  
 NLIS : WKAM0344XBDD0008  
 NFID: 982 000118810185  
 Pen: 1



Maternal brothers: A33 & B2

WILLALOOKA RAMSAY (GR)  
 WILLALOOKA MAIN BREAK V856 (PB)  
 WILLALOOKA S695 (GR)  
**S: BUNDALEER CASH FLOW Y6 (PB)**  
 MONTEREY SHILOH (PB)  
 BUNDALEER MELISSA W16 (PB)  
 KOOJAN HILL MELISSA N26 (PB)

BUNDALEER MAX M33 (PB)  
 BUNDALEER PAYDAY P43 (PB)  
 BUNDALEER DIANNA M04 (PB)  
**D: MARTINDALE TERRE T48 (PB)**  
 SPRINGWELL ARMOUR L199 (PB)  
 MARTINDALE NU FAME (PB)  
 MARTINDALE LE-FAME (PB)

	Calving				Growth & Maternal					Fertility	
	Calv. Ease Direct (%)	Calv. Ease Dtrs (%)	Gest. Len. (days)	Birth Wt. (kg)	200 Day Wt. (kg)	400 Day Wt. (kg)	600 Day Wt. (kg)	Mat. Cow Wt. (kg)	Milk (kg)	Scrot. Size (cm)	Days to Calv.
EBV	-	-	-	+4.8	+25	+43	+61	-	+6	+1.8	-
ACC.	-	-	-	59%	54%	51%	53%	-	36%	42%	-

	300 KG Carcase						\$ Index		
	Carcase Wt. (kg)	Eye Muscle Area (cm <sup>2</sup> )	Rib Fat (mm)	Rump Fat (mm)	Retail Beef Yield (%)	IMF %	Long Fed Export (\$)	Super market (\$)	Heavy Grass Fed (\$)
EBV	-	+ 2.3	-1.1	-1.6	+2.0	-0.5	+\$ 30	+\$ 39	+\$ 42
ACC.	-	34%	44%	44%	39%	35%			

Notes: A thick-set meat machine. He has been one of the high performers at each weighing and scanned one of the largest EMAs. His dam is a large volume female that always rears a growthy, thick set, structurally sound calf. We have had very favourable feedback from commercial clients that have purchased her sons in the past and we expect D8 will follow suit.

Purchaser: \_\_\_\_\_ \$ \_\_\_\_\_

**LOT 2**

**BUNDALEER DOWN UNDER D12 (PB)**

Born: 13/04/2008 Age: 21.2 months  
 Tattoo: JOS D12  
 Colour: Silver MG% : 100  
 NLIS : WKAM0344XBDD0012  
 NFID: 982 000118810204  
 Pen: 1



WEIGHT:  
 SCROTAL:  
 EMA:  
 FRAME SCORE:

WILLALOOKA RAMSAY (GR)  
 WILLALOOKA MAIN BREAK V856 (PB)  
 WILLALOOKA S695 (GR)  
**S: BUNDALEER CASH FLOW Y6 (PB)**  
 MONTEREY SHILOH (PB)  
 BUNDALEER MELISSA W16 (PB)  
 KOOJAN HILL MELISSA N26 (PB)

ORCADIA PARK REMBRANDT (PB)  
 ORCADIA PARK DESTINY L41 ET (PB)  
 ORCADIA PARK MINETTE 1002 (PB)  
**D: BUNDALEER EMERALD Q14 (PB)**  
 KOOJAN HILL DEMPSEY (PB)  
 BUNDALEER OPAL 64 (PB)  
 BUNDALEER OPAL 139 (PB)

	Calving				Growth & Maternal					Fertility	
	Calv. Ease Direct (%)	Calv. Ease Dtrs (%)	Gest. Len. (days)	Birth Wt. (kg)	200 Day Wt. (kg)	400 Day Wt. (kg)	600 Day Wt. (kg)	Mat. Cow Wt. (kg)	Milk (kg)	Scrot. Size (cm)	Days to Calv.
EBV	-	-	-	+5.0	+29	+36	+49	-	+5	-0.3	-
ACC.	-	-	-	59%	55%	53%	55%	-	41%	45%	-

	300 KG Carcase						\$ Index		
	Carcase Wt. (kg)	Eye Muscle Area (cm <sup>2</sup> )	Rib Fat (mm)	Rump Fat (mm)	Retail Beef Yield (%)	IMF %	Long Fed Export (\$)	Super market (\$)	Heavy Grass Fed (\$)
EBV	-	+ 1.6	-0.8	-1.1	+1.9	-0.3	+\$ 24	+\$ 30	+\$ 34
ACC.	-	36%	46%	46%	41%	37%			

Notes: A long bodied, well balanced bull with good early growth figures (top 5 -15% 200 & 400DG) and out of a very good female. Down Under was one of the heavier calves at weaning. Very suitable for a self replacing herd targeting domestic requirements.

Purchaser: \_\_\_\_\_ \$ \_\_\_\_\_

**LOT 3**

**BUNDALEER DEMOCRAT D37 (PB)**

Born: 27/04/2008 Age: 20.8 months  
 Tattoo: JOS D37  
 Colour: Silver MG% : 100  
 NLIS : WKAM0344XBDD0037  
 NFID: 982 000118810054  
 Pen: 1



Dam: B. Joyce A22

WEIGHT:  
 SCROTAL:  
 EMA:  
 F SCORE:

SPRINGWELL JAGUAR L138 (PB)  
 SPRINGWELL TRUMP CARD T58 (PB)  
 SPRINGWELL DAIYA N95 (PB)

WILLALOOKA MAIN BREAK V856 (PB)  
 BUNDALEER YA HOO Y11 (PB)  
 BUNDALEER ROWAN R27 (PB)

**S: BUNDALEER POWER PLAY A2 (PB)**  
 BUNDALEER MAX M33 (PB)  
 BUNDALEER DAVINA Q48 (PB)  
 BUNDALEER DAVINA 201 (PB)

**D: BUNDALEER JOYCE A22 (GR)**  
 WILLALOOKA MAIN BREAK V856 (PB)  
 BUNDALEER JOYCE Y32 (PB)  
 BUNDALEER JOYCE U8 (PB)

	Calving				Growth & Maternal					Fertility	
	Calv. Ease Direct (%)	Calv. Ease Dtrs (%)	Gest. Len. (days)	Birth Wt. (kg)	200 Day Wt. (kg)	400 Day Wt. (kg)	600 Day Wt. (kg)	Mat. Cow Wt. (kg)	Milk (kg)	Scrot. Size (cm)	Days to Calv.
EBV	-	-	-	+4.4	+28	+39	+55	-	+ -	+ 1.0	-
ACC.	-	-	-	54%	49%	46%	49%	-	-	37%	-

	300 KG Carcase						\$ Index		
	Carcase Wt. (kg)	Eye Muscle Area (cm <sup>2</sup> )	Rib Fat (mm)	Rump Fat (mm)	Retail Beef Yield (%)	IMF %	Long Fed Export (\$)	Super market (\$)	Heavy Grass Fed (\$)
EBV	-	+ 0.9	-0.3	-0.4	+ 0.7	+ 0.3	+\$ 28	+\$ 33	+\$ 38
ACC.	-	32%	43%	43%	38%	35%			

Notes: A big growthy bull with plenty of capacity and an easy doing constitution. Like the majority of Power Play cattle he offers a moderate birth weight figure and smooth shoulders. Additionally, he combines positive IMF and a minimum of 4/8 alleles for tenderness. His dam has colossal volume and performance; she sold last year to the Raymond Park Murray Grey Stud.

Purchaser: \_\_\_\_\_ \$ \_\_\_\_\_

**LOT 4**

**BUNDALEER DEALER D40**

Born: 29/04/2008 Age: 20.7 months  
 Tattoo: JOS D40  
 Colour: Grey MG% : 100  
 NLIS : WKAM0344XBDD0040  
 NFID: 982 000118810020  
 Pen: 1



Maternal brother: B. Zone Z27

SPRINGWELL JAGUAR L138 (PB)  
 SPRINGWELL TRUMP CARD T58 (PB)  
 SPRINGWELL DAIYA N95 (PB)

MONTEREY CENTURY TW (PB)  
 MONTEREY SHILOH (PB)  
 MONTEREY MAGNOLIA 3RD (PB)

**S: BUNDALEER POWER PLAY A2 (PB)**  
 BUNDALEER MAX M33 (PB)  
 BUNDALEER DAVINA Q48 (PB)  
 BUNDALEER DAVINA 201 (PB)

**D: BUNDALEER JOYCE U8 (PB)**  
 BUNDALEER PROPHET P2 (PB)  
 BUNDALEER JOYCE R16 (PB)  
 KOOUAN HILL JOYCE N12 (PB)

	Calving				Growth & Maternal					Fertility	
	Calv. Ease Direct (%)	Calv. Ease Dtrs (%)	Gest. Len. (days)	Birth Wt. (kg)	200 Day Wt. (kg)	400 Day Wt. (kg)	600 Day Wt. (kg)	Mat. Cow Wt. (kg)	Milk (kg)	Scrot. Size (cm)	Days to Calv.
EBV	-2.9	+0.1	+0.3	+4.2	+27	+41	+61	+74	+2	+ 1.1	-0.4
ACC.	MPV	MPV	MPV	MPV	MPV	MPV	MPV	MPV	MPV	MPV	MPV

	300 KG Carcase						\$ Index		
	Carcase Wt. (kg)	Eye Muscle Area (cm <sup>2</sup> )	Rib Fat (mm)	Rump Fat (mm)	Retail Beef Yield (%)	IMF %	Long Fed Export (\$)	Super market (\$)	Heavy Grass Fed (\$)
EBV	+ 40	+ 1.9	-1.0	-1.3	+ 1.6	-0.2	+\$ 32	+\$ 42	+\$ 45
ACC.	MPV	MPV	MPV	MPV	MPV	MPV			

Notes: D40 has superb thickness and length, without being too heavy in bone or too course in the shoulder. Across the traits he is generally in the top 5-10% for growth and carcase weights, EMA and RBY. His dam has been the number one growth female in the breed for the past 5-6 years and remains one of our top females. Dam features as Donor female in lot 25.

Purchaser: \_\_\_\_\_ \$ \_\_\_\_\_

## LOT 5 BUNDALEER DIAMOND DOG D32 (PB)

Born: 25/04/2008 Age: 20.9 months  
 Tattoo: JOS D32  
 Colour: Grey MG% : 100  
 NLIS : WKAM0344XBDD0032  
 NFID: 982 000118810250  
 Pen: 2



WEIGHT:  
 SCROTAL:  
 EMA:  
 FRAME SCORE:

MONTEREY SHILOH (PB)  
 BUNDALEER WORLD CLASS W18 (PB)  
 BUNDALEER OPAL P4 (PB)  
**S: BUNDALEER BACKLINE B31 (PB)**  
 BUNDALEER PROPHET P2 (PB)  
 BUNDALEER ROWAN R27 (PB)  
 KOOJAN HILL ROWAN M26 (PB)

MONTEREY SHILOH (PB)  
 BUNDALEER WORLD CLASS W18 (PB)  
 BUNDALEER OPAL P4 (PB)  
**D: BUNDALEER LOLITA A20 (PB)**  
 MONTEREY SUNDOWNER (PB)  
 BUNDALEER LOLITA X8 (PB)

	Calving				Growth & Maternal					Fertility	
	Calv. Ease Direct	Calv. Ease Dtrs	Gest. Len.	Birth Wt.	200 Day Wt.	400 Day Wt.	600 Day Wt.	Mat. Cow Wt.	Milk (kg)	Scrot. Size (cm)	Days to Calv.
	(%)	(%)	(days)	(kg)	(kg)	(kg)	(kg)	(kg)	(cm)		
EBV	-	-	-	+7.2	+39	+57	+78	+75	+3	+0.4	-
ACC.	MPV	MPV	MPV	MPV	MPV	MPV	MPV	MPV	MPV	MPV	MPV

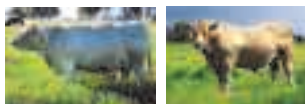
	300 KG Carcase						\$ Index		
	Carcase Wt.	Eye Muscle Area	Rib Fat	Rump Fat	Retail Beef Yield	IMF %	Long Fed Export (\$)	Super market (\$)	Heavy Grass Fed (\$)
	(kg)	(cm <sup>2</sup> )	(mm)	(mm)	(%)	%	(\$)	(\$)	(\$)
EBV	-	+ 2.0	-1.2	-1.7	+ 2.1	-0.6	+\$ 29	+\$ 43	+\$ 46
ACC.	MPV	MPV	MPV	MPV	MPV	MPV			

Notes: A bull that packs some punch if his phenotype and Mid Parent Values are any measure. Growth in Top Value - 1% range for 200 & 400 day growth. Raw birth weight of 46kg (about the same as a low birth weight Euro) so joining to cows would be fine. And, he has EMA and RBY in top 5-10%. Would work very well over bos-indicus and F1 types, where growth, muscle and fat are paramount. If you like thick butted calves and retaining replacement breeders are required, Diamond Dog is worth a look!

Purchaser: \_\_\_\_\_ \$ \_\_\_\_\_

## LOT 6 BUNDALEER DANNY BOY D14 (PB)

Born: 14/04/2008 Age: 21.2 months  
 Tattoo: JOS D14  
 Colour: Silver MG% : 100  
 NLIS : WKAM0344XBDD0014  
 NFID: 982 000118810737  
 Pen: 2



Dam (X33) and maternal brother: B. Amoré A4  
 WILLALOOKA MAIN BREAK V856 (PB)  
 BUNDALEER CASH FLOW Y6 (PB)  
 BUNDALEER MELISSA W16 (PB)  
**S: BUNDALEER TRUE BLUE A68 (PB)**  
 BUNDALEER PAYDAY P43 (PB)  
 BUNDALEER REMEMBRANCE DAY (PB)  
 BUNDALEER OPAL P4 (PB)

MONTEREY SHILOH (PB)  
 BUNDALEER UNCLE SAM U18 (PB)  
 BUNDALEER LOLITA P6 (PB)  
**D: BUNDALEER MARIAH X33 (PB)**  
 BUNDALEER MAX M33 (PB)  
 BUNDALEER MARIAH R97 (PB)  
 MONTEREY MARIAH (PB)

	Calving				Growth & Maternal					Fertility	
	Calv. Ease Direct	Calv. Ease Dtrs	Gest. Len.	Birth Wt.	200 Day Wt.	400 Day Wt.	600 Day Wt.	Mat. Cow Wt.	Milk (kg)	Scrot. Size (cm)	Days to Calv.
	(%)	(%)	(days)	(kg)	(kg)	(kg)	(kg)	(kg)	(kg)	(cm)	
EBV	-	-	-	+5.4	+30	+41	+58	-	-	+0.8	-
ACC.	-	-	-	53%	46%	45%	47%	-	-	39%	-

	300 KG Carcase						\$ Index		
	Carcase Wt.	Eye Muscle Area	Rib Fat	Rump Fat	Retail Beef Yield	IMF %	Long Fed Export (\$)	Super market (\$)	Heavy Grass Fed (\$)
	(kg)	(cm <sup>2</sup> )	(mm)	(mm)	(%)	%	(\$)	(\$)	(\$)
EBV	-	+ 1.7	-0.9	-1.3	+ 1.7	-0.4	+\$ 24	+\$ 33	+\$ 33
ACC.	-	30%	38%	38%	35%	32%			

Notes: A high performance True Blue son that is very well balanced and is well suited for today's local and export markets. He will grow into an impressive sire and we expect his daughters to be reliable, large volume females that can add that little bit extra. His dam has thumped out a 'flight' of superb calves. For either the stud or commercial herd this bloke will have an impact. **Selling 3/4 share and possession**

Purchaser: \_\_\_\_\_ \$ \_\_\_\_\_

# LOT 7

# BUNDALEER DA FUNK D29 (PB)

Born: 25/04/2008 Age: 20.9 months  
 Tattoo: JOS D29  
 Colour: Silver MG% : 100  
 NLIS : WKAM0344XBDD0029  
 NFID: 982 000118810033  
 Pen: 2



WEIGHT:  
 SCROTAL:  
 EMA:  
 FRAME SCORE:

SPRINGWELL JAGUAR L138 (PB)  
 SPRINGWELL TRUMP CARD T58 (PB)  
 SPRINGWELL DAIYA N95 (PB)  
**S: BUNDALEER POWER PLAY A2 (PB)**  
 BUNDALEER MAX M33 (PB)  
 BUNDALEER DAVINA Q48 (PB)  
 BUNDALEER DAVINA 201 (PB)

WILLALOOKA RAMSAY (GR)  
 WILLALOOKA MAIN BREAK V856 (PB)  
 WILLALOOKA S895 (GR)  
**D: BUNDALEER IMPOST Y30 TY (PB)**  
 BUNDALEER KING 71 (PB)  
 BUNDALEER MPOST P1 (PB)  
 BUNDALEER IMPOST 167 (PB)

	Calving				Growth & Maternal					Fertility	
	Calv. Ease Direct	Calv. Ease Dtrs	Gest. Len.	Birth Wt.	200 Day Wt.	400 Day Wt.	600 Day Wt.	Mat. Cow Wt.	Milk (kg)	Scrot. Size (cm)	Days to Calv.
	(%)	(%)	(days)	(kg)	(kg)	(kg)	(kg)	(kg)	(cm)		
EBV	-	-	-	+3.2	+23	+34	+50	-	+1	+0.5	-
ACC.	-	-	-	54%	50%	48%	51%	-	40%	42%	-

	300 KG Carcase					\$ Index			
	Carcase Wt.	Eye Muscle Area	Rib Fat	Rump Fat	Retail Beef Yield	IMF %	Long Fed Export	Super market	Heavy Grass Fed
	(kg)	(cm <sup>2</sup> )	(mm)	(mm)	(%)	%	(\$)	(\$)	(\$)
EBV	-	+ 1.0	-0.2	-0.4	+ 0.6	+ 0.4	+\$ 33	+\$ 35	+\$ 38
ACC.	-	34%	44%	44%	40%	36%			

Notes: One of the picks from the drop. A bull that puts it all together – fertility, structure, solid 400 day growth, muscle and constitution. His full brother was one of the picks last year and his three quarter siblings at the 2008 PRS did exceptionally well. Birth Weight close to breed average with growth figures in the top 20% and IMF in the top 10%. His dam is one of four P1 x V856 daughters that we have in the herd – all very reliable breeders. 3/4 Brother sells as Lot 10

Purchaser: \_\_\_\_\_ \$ \_\_\_\_\_

# LOT 8

# BUNDALEER DEFENCE D18 (PB)

Born: 17/04/2008 Age: 21.1 months  
 Tattoo: JOS D18  
 Colour: Silver MG% : 100  
 NLIS : WKAM0344XBDD0018  
 NFID: 982 000118810294  
 Pen: 2



WEIGHT:  
 SCROTAL:  
 EMA:  
 FRAME SCORE:

WILLALOOKA RAMSAY (GR)  
 WILLALOOKA MAIN BREAK V856 (PB)  
 WILLALOOKA S895 (GR)  
**S: BUNDALEER CASH FLOW Y6 (PB)**  
 MONTEREY SHILOH (PB)  
 BUNDALEER MELISSA W16 (PB)  
 KOOJAN HILL MELISSA N26 (PB)

THE GLEN SANDBOY (PB)  
 MONTEREY MAJESTIC (PB)  
 WANDENA NELLA (PB)  
**D: BUNDALEER TT Z9 (PB)**  
 BUNDALEER PROPHET P2 (PB)  
 BUNDALEER T.T. R28 (PB)  
 BUNDALEER LOLITA N29 (PB)

	Calving				Growth & Maternal					Fertility	
	Calv. Ease Direct	Calv. Ease Dtrs	Gest. Len.	Birth Wt.	200 Day Wt.	400 Day Wt.	600 Day Wt.	Mat. Cow Wt.	Milk (kg)	Scrot. Size (cm)	Days to Calv.
	(%)	(%)	(days)	(kg)	(kg)	(kg)	(kg)	(kg)	(kg)	(cm)	
EBV	-	-	-	+1.7	+18	+28	+38	-	+5	+1.0	-
ACC.	-	-	-	57%	53%	50%	53%	-	36%	41%	-

	300 KG Carcase					\$ Index			
	Carcase Wt.	Eye Muscle Area	Rib Fat	Rump Fat	Retail Beef Yield	IMF %	Long Fed Export	Super market	Heavy Grass Fed
	(kg)	(cm <sup>2</sup> )	(mm)	(mm)	(%)	%	(\$)	(\$)	(\$)
EBV	-	+ 2.4	-1.2	-1.6	+ 2.2	-0.6	+\$ 31	+\$ 33	+\$ 39
ACC.	-	34%	45%	45%	40%	37%			

Notes: D18 has all the hallmarks of a suitable heifer bull, without being too fine. Birth Wt, Milk and Index Values in the top 20-30%, RBY in top 1% and EMA and Scrotal in top 5-10%. He has enough fleshing, frame and constitution without raising the blood pressure! We used his maternal half brother for two seasons over our heifers and he did an excellent job – we consider D18 also suitable for heifer joining. Thus, we offer him with our Heifer Bull Guarantee.

Purchaser: \_\_\_\_\_ \$ \_\_\_\_\_

# LOT 9

# BUNDALEER DADDY COOL D74 (PB)

Born: 13/07/2008 Age: 18.3 months  
 Tattoo: JOS D74  
 Colour: Grey MG% : 100  
 NLIS : WKAM0344XBDD0074  
 NFID: 982 000118810393  
 Pen: 3 (YOUNG BULLS)



WEIGHT:  
 SCROTAL:  
 EMA:  
 FRAME SCORE:

WILLALOOKA MAIN BREAK V856 (PB)  
 BUNDALEER CASH FLOW Y6 (PB)  
 BUNDALEER MELISSA W16 (PB)  
 S: **BUNDALEER TRUE BLUE A68 (PB)**  
 BUNDALEER PAYDAY P43 (PB)  
 BUNDALEER REMEMBRANCE DAY (PB)  
 BUNDALEER OPAL P4 (PB)

WILLALOOKA RAMSAY (GR)  
 WILLALOOKA MAIN BREAK V856 (PB)  
 WILLALOOKA S895 (GR)  
 D: **BUNDALEER TT Y23 (PB)**  
 BUNDALEER ROUND UP R24 (PB)  
 BUNDALEER T.T. T30 (PB)  
 BUNDALEER T.T. R28 (PB)

EBV ACC.	Calving				Growth & Maternal					Fertility	
	Calv. Ease Direct (%)	Calv. Ease Dtrs (%)	Gest. Len. (days)	Birth Wt. (kg)	200 Day Wt. (kg)	400 Day Wt. (kg)	600 Day Wt. (kg)	Mat. Cow Wt. (kg)	Milk (kg)	Scrot. Size (cm)	Days to Calv.
	-	-	-	+5.3	+33	+50	+70	-	-	+0.4	-
-	-	-	52%	46%	43%	46%	-	-	35%	-	

EBV ACC.	300 KG Carcase						\$ Index		
	Carcase Wt. (kg)	Eye Muscle Area (cm <sup>2</sup> )	Rib Fat (mm)	Rump Fat (mm)	Retail Beef Yield (%)	IMF %	Long Fed Export (\$)	Super market (\$)	Heavy Grass Fed (\$)
	-	+ 1.6	-0.8	-1.1	+ 1.4	0.0	+\$ 34	+\$ 43	+\$ 44
-	29%	38%	38%	35%	32%				

Notes: A young, rugged bull that has grinded-it-out through the season. We expect these bulls to tough-it-out when the tough-gets-going and finish when it counts – no excuses. Daddy Cool will grow out into a large volume sire, suited for the 400 day markets. Growth figures in top 1% of the breed with a very acceptable Birth Weight figure. Dam is now a trailleader for all growth traits.

Purchaser: \_\_\_\_\_ \$ \_\_\_\_\_

# LOT 10

# BUNDALEER DAVID D60 (PB)

Born: 04/06/2008 Age: 19.5 months  
 Tattoo: JOS D60  
 Colour: Silver MG% : 100  
 NLIS : WKAM0344XBDD0060  
 NFID: 982 000118810650  
 Pen: 3 (YOUNG BULLS)



WEIGHT:  
 SCROTAL:  
 EMA:  
 FRAME SCORE:

SPRINGWELL JAGUAR L138 (PB)  
 SPRINGWELL TRUMP CARD T58 (PB)  
 SPRINGWELL DAYA N95 (PB)  
 S: **BUNDALEER POWER PLAY A2 (PB)**  
 BUNDALEER MAX M33 (PB)  
 BUNDALEER DAVINA Q48 (PB)  
 BUNDALEER DAVINA 201 (PB)

WILLALOOKA RAMSAY (GR)  
 WILLALOOKA MAIN BREAK V856 (PB)  
 WILLALOOKA S895 (GR)  
 D: **BUNDALEER IMPOST Y31 TW (PB)**  
 BUNDALEER KING 71 (PB)  
 BUNDALEER IMPOST P1 (PB)  
 BUNDALEER IMPOST 167 (PB)

EBV ACC.	Calving				Growth & Maternal					Fertility	
	Calv. Ease Direct (%)	Calv. Ease Dtrs (%)	Gest. Len. (days)	Birth Wt. (kg)	200 Day Wt. (kg)	400 Day Wt. (kg)	600 Day Wt. (kg)	Mat. Cow Wt. (kg)	Milk (kg)	Scrot. Size (cm)	Days to Calv.
	-	-	-	+4.6	+25	+37	+53	-	+1	+1.1	-
-	-	-	53%	49%	47%	50%	-	38%	39%	-	

EBV ACC.	300 KG Carcase						\$ Index		
	Carcase Wt. (kg)	Eye Muscle Area (cm <sup>2</sup> )	Rib Fat (mm)	Rump Fat (mm)	Retail Beef Yield (%)	IMF %	Long Fed Export (\$)	Super market (\$)	Heavy Grass Fed (\$)
	-	+ 0.9	-0.6	-0.8	+ 0.8	+0.1	+\$ 23	+\$ 30	+\$ 32
-	33%	43%	43%	39%	36%				

Notes: A growthy Power Play son that has plenty of capacity and fleshing. From behind he is thick through the hips and pins and carries plenty of red meat down through his second thigh. Breedplan figures for growth around the top 15% and Scrotal in top 10%. We consider David a bull well suited for vealer or grain finished markets.

Purchaser: \_\_\_\_\_ \$ \_\_\_\_\_

## LOT 11 BUNDALEER DARK KNIGHT D62 (BF)

Born: 14/06/2008 Age: 19.2 months  
 Tattoo: JOS D62  
 Colour: Black MG% : 100  
 NLIS : WKAM0344XBDD0062  
 NFID: 982 000118810009  
 Pen: 3 (YOUNG BULLS)



WEIGHT:  
 SCROTAL:  
 EMA:  
 FRAME SCORE:

WILLALOOKA MAIN BREAK V856 (PB)  
 BUNDALEER CASH FLOW Y6 (PB)  
 BUNDALEER MELISSA W16 (PB)  
 S: **BUNDALEER TRUE BLUE A68 (PB)**  
 BUNDALEER PAYDAY P43 (PB)  
 BUNDALEER REMEMBRANCE DAY (PB)  
 BUNDALEER OPAL P4 (PB)

MONTEREY SHLOH (PB)  
 BUNDALEER WORLD CLASS W18 (PB)  
 BUNDALEER OPAL P4 (PB)  
 D: **BUNDALEER LOLITA B63 (PB)**  
 BUNDALEER UNCLE SAM U18 (PB)  
 BUNDALEER LOLITA W25 (PB)  
 BUNDALEER LOLITA S14 (PB)

EBV ACC.	Calving				Growth & Maternal					Fertility	
	Calv. Ease Direct (%)	Calv. Ease Dtrs (%)	Gest. Len. (days)	Birth Wt. (kg)	200 Day Wt. (kg)	400 Day Wt. (kg)	600 Day Wt. (kg)	Mat. Cow Wt. (kg)	Milk (kg)	Scrot. Size (cm)	Days to Calv.
	-	-	-	+6.2	+32	+45	+63	-	-	+0.4	-
-	-	-	51%	43%	41%	42%	-	-	34%	-	

EBV ACC.	300 KG Carcase					\$ Index			
	Carcase Wt. (kg)	Eye Muscle Area (cm <sup>2</sup> )	Rib Fat (mm)	Rump Fat (mm)	Retail Beef Yield (%)	IMF %	Long Fed Export (\$)	Super market (\$)	Heavy Grass Fed (\$)
	-	+ 1.6	-1.2	-1.7	+ 1.8	-0.5	+\$ 16	+\$ 30	+\$ 28
-	25%	31%	31%	28%	26%				

Notes: A very well put together bull – extension through the neck, strong chine and topline combined with a thick and square rump. He has a low raw birth weight and consider him an excellent choice for second calvers targeting grass or grain finish.

Purchaser: \_\_\_\_\_ \$ \_\_\_\_\_

## LOT 12 BUNDALEER DEIFY D70 (PB)

Born: 01/07/2008 Age: 18.7 months  
 Tattoo: JOS D70  
 Colour: Silver MG% : 100  
 NLIS : WKAM0344XBDD0070  
 NFID: 982 000118810394  
 Pen: 3 (YOUNG BULLS)



WEIGHT:  
 SCROTAL:  
 EMA:  
 FRAME SCORE:

WILLALOOKA MAIN BREAK V856 (PB)  
 BUNDALEER CASH FLOW Y6 (PB)  
 BUNDALEER MELISSA W16 (PB)  
 S: **BUNDALEER TRUE BLUE A68 (PB)**  
 BUNDALEER PAYDAY P43 (PB)  
 BUNDALEER REMEMBRANCE DAY (PB)  
 BUNDALEER OPAL P4 (PB)

BUNDALEER MAX M33 (PB)  
 BUNDALEER PAYDAY P43 (PB)  
 BUNDALEER DIANNA M04 (PB)  
 D: **BUNDALEER MELISSA R137 (PB)**  
 LOCHABER-BRAES DIPLOMAT (PB)  
 KOOJAN HILL MELISSA N26 (PB)  
 KOOJAN HILL MELISSA 734 (PB)

EBV ACC.	Calving				Growth & Maternal					Fertility	
	Calv. Ease Direct (%)	Calv. Ease Dtrs (%)	Gest. Len. (days)	Birth Wt. (kg)	200 Day Wt. (kg)	400 Day Wt. (kg)	600 Day Wt. (kg)	Mat. Cow Wt. (kg)	Milk (kg)	Scrot. Size (cm)	Days to Calv.
	-	-	-	+3.7	+22	+32	+41	-	-	+2	+0.6
-	-	-	54%	47%	47%	48%	-	-	39%	40%	-

EBV ACC.	300 KG Carcase					\$ Index			
	Carcase Wt. (kg)	Eye Muscle Area (cm <sup>2</sup> )	Rib Fat (mm)	Rump Fat (mm)	Retail Beef Yield (%)	IMF %	Long Fed Export (\$)	Super market (\$)	Heavy Grass Fed (\$)
	-	+ 1.4	-1.1	-1.6	+ 1.8	-0.6	+\$ 19	+\$ 25	+\$ 26
-	31%	36%	36%	34%	31%				

Notes: One of the younger bulls in the line up. A moderate growth True Blue son out of a very good female. Plenty of length, smooth shoulders with high EMA and RBY. Dam sells as Lot 34

Purchaser: \_\_\_\_\_ \$ \_\_\_\_\_

# LOT 13

# BUNDALEER DESIRE D30 (PB)

Born: 25/04/2008 Age: 20.9 months  
 Tattoo: JOS D30  
 Colour: Grey MG% : 100  
 NLIS : WKAM0344XBDD0030  
 NFID: 982 000118810593  
 Pen: 4



WEIGHT:  
 SCROTAL:  
 EMA:  
 FRAME SCORE:

WILLALOOKA MAIN BREAK V856 (PB)  
 BUNDALEER CASH FLOW Y6 (PB)  
 BUNDALEER MELISSA W16 (PB)  
 S: **BUNDALEER TRUE BLUE A68 (PB)**  
 BUNDALEER PAYDAY P43 (PB)  
 BUNDALEER REMEMBRANCE DAY (PB)  
 BUNDALEER OPAL P4 (PB)

LOCHABER-BRAES DIPLOMAT (PB)  
 MONTEREY STAR CHIEF (PB)  
 MONTEREY MARTINI (PB)  
 D: **BUNDALEER CARRIE Z4 (PB)**  
 WILLALOOKA LEEDS (PB)  
 WILLALOOKA P5 (PB)  
 WILLALOOKA CARRIE M265 (BF)

EBV ACC.	Calving				Growth & Maternal					Fertility	
	Calv. Ease Direct (%)	Calv. Ease Dtrs (%)	Gest. Len. (days)	Birth Wt. (kg)	200 Day Wt. (kg)	400 Day Wt. (kg)	600 Day Wt. (kg)	Mat. Cow Wt. (kg)	Milk (kg)	Scrot. Size (cm)	Days to Calv.
	-	-	-	+4.2	+24	+34	+49	-	+5	+0.4	-
-	-	-	53%	47%	45%	48%	-	37%	37%	-	

EBV ACC.	300 KG Carcase						\$ Index		
	Carcass Wt. (kg)	Eye Muscle Area (cm <sup>2</sup> )	Rib Fat (mm)	Rump Fat (mm)	Retail Beef Yield (%)	IMF %	Long Fed Export (\$)	Super market (\$)	Heavy Grass Fed (\$)
	-	+ 1.7	-0.1	-0.1	+ 1.1	-0.1	+\$ 31	+\$ 34	+\$ 37
-	33%	40%	40%	38%	35%				

Notes: A good headed True Blue son with extra length and solid growth. He has a very comfortable set of figures mostly in the top 15-25% range. His dam is from one of the top female lines in South Australia, his grand dam P5 was a past trail-leader.

Purchaser: \_\_\_\_\_ \$ \_\_\_\_\_

# LOT 14

# BUNDALEER DESTINY D35 (PB)

Born: 26/04/2008 Age: 20.8 months  
 Tattoo: JOS D35  
 Colour: Silver MG% : 100  
 NLIS : WKAM0344XBDD0035  
 NFID: 982 000118810298  
 Pen: 4



WEIGHT:  
 SCROTAL:  
 EMA:  
 FRAME SCORE:

SPRINGWELL JAGUAR L138 (PB)  
 SPRINGWELL TRUMP CARD T58 (PB)  
 SPRINGWELL DAYA N95 (PB)  
 S: **BUNDALEER POWER PLAY A2 (PB)**  
 BUNDALEER MAX M33 (PB)  
 BUNDALEER DAVINA Q48 (PB)  
 BUNDALEER DAVINA 201 (PB)

MONTEREY SHILOH (PB)  
 BUNDALEER WORLD CLASS W18 (PB)  
 BUNDALEER OPAL P4 (PB)  
 D: **BUNDALEER TOPSY A61 (PB)**  
 BUNDALEER PAYDAY P43 (PB)  
 MARTINDALE TOPSY T42 (PB)  
 MARTINDALE MOPPY (PB)

EBV ACC.	Calving				Growth & Maternal					Fertility	
	Calv. Ease Direct (%)	Calv. Ease Dtrs (%)	Gest. Len. (days)	Birth Wt. (kg)	200 Day Wt. (kg)	400 Day Wt. (kg)	600 Day Wt. (kg)	Mat. Cow Wt. (kg)	Milk (kg)	Scrot. Size (cm)	Days to Calv.
	-	-	-	+4.4	+22	+30	+41	-	-4	+1.0	-
-	-	-	54%	49%	46%	48%	-	37%	40%	-	

EBV ACC.	300 KG Carcase						\$ Index		
	Carcass Wt. (kg)	Eye Muscle Area (cm <sup>2</sup> )	Rib Fat (mm)	Rump Fat (mm)	Retail Beef Yield (%)	IMF %	Long Fed Export (\$)	Super market (\$)	Heavy Grass Fed (\$)
	-	+ 1.6	0.0	-0.1	+ 0.9	-0.1	+\$ 16	+\$ 22	+\$ 25
-	31%	39%	39%	36%	32%				

Notes: A rock-solid grey. Good shape, enough fat and moderate birth weight. Another Power Play son that puts good phenotype and satisfactory growth into one package. His dam is a milky, top young female.

Purchaser: \_\_\_\_\_ \$ \_\_\_\_\_

## LOT 15 BUNDALEER DYNAMITE D25 (PB)

Born: 23/04/2008 Age: 20.9 months  
 Tattoo: JOS D25  
 Colour: Grey MG% : 100  
 NLIS : WKAM0344XBDD0025  
 NFID: 982.000118810034  
 Pen: 4



WEIGHT:  
 SCROTAL:  
 EMA:  
 FRAME SCORE:

WILLALOOKA MAIN BREAK V856 (PB)  
 BUNDALEER CASH FLOW Y6 (PB)  
 BUNDALEER MELISSA W16 (PB)  
**S: BUNDALEER TRUE BLUE A68 (PB)**  
 BUNDALEER PAYDAY P43 (PB)  
 BUNDALEER REMEMBRANCE DAY (PB)  
 BUNDALEER OPAL P4 (PB)

BUNDALEER MAX M33 (PB)  
 BUNDALEER PAYDAY P43 (PB)  
 BUNDALEER DIANNA M04 (PB)  
**D: MARTINDALE TEENA T112 (PB)**  
 BRANTWOOD BRONTE 2 (PB)  
 MARTINDALE MUSK (PB)  
 MARTINDALE TACKLE (PB)

EBV ACC.	Calving				Growth & Maternal					Fertility	
	Calv. Ease Direct (%)	Calv. Ease Dtrs (%)	Gest. Len. (days)	Birth Wt. (kg)	200 Day Wt. (kg)	400 Day Wt. (kg)	600 Day Wt. (kg)	Mat. Cow Wt. (kg)	Milk (kg)	Scrot. Size (cm)	Days to Calv.
	-	-	-	+5.1	+30	+41	+51	-	+4	+0.3	-
			59%	54%	51%	54%	-	38%	44%	-	

EBV ACC.	300 KG Carcase						\$ Index		
	Carcase Wt. (kg)	Eye Muscle Area (cm <sup>2</sup> )	Rib Fat (mm)	Rump Fat (mm)	Retail Beef Yield (%)	IMF %	Long Fed Export (\$)	Super market (\$)	Heavy Grass Fed (\$)
	-	+ 1.8	-1.2	-1.7	+ 1.9	-0.4	+\$ 15	+\$ 27	+\$ 22
	34%	45%	45%	40%	35%				

Notes: A bull with exceptional length and capacity and will be a large bull at maturity. He has 200, 400 day growth, EMA and RBV in the top 5-10% of the breed. Would suit purebred herd requiring a little more stretch in the calves. His dam has been a very reliable matron.

Purchaser: \_\_\_\_\_ \$ \_\_\_\_\_

## LOT 16 BUNDALEER DAZZLE D58 (D58)

Born: 27/05/2008 Age: 19.8 months  
 Tattoo: JOS D58  
 Colour: Silver MG% : 100  
 NLIS : WKAM0344XBDD0058  
 NFID: 982.000118810072  
 Pen: 4



WEIGHT:  
 SCROTAL:  
 EMA:  
 FRAME SCORE:



Sire: M. Flintoff

NEWHAVEN PARK PERICLES (PB)  
 MUNGATTA APOLLOS (PB)  
 MUNGATTA JUNIPER L19 (PB)  
**S: MUNGATTA FLINTOFF (PB)**  
 MUNGATTA YUKON (PB)  
 MUNGATTA IRIS W12 (PB)  
 MUNGATTA IRIS S47 (PB)

WILLALOOKA RAMSAY (GR)  
 WILLALOOKA MAIN BREAK V856 (PB)  
 WILLALOOKA S695 (GR)  
**D: BUNDALEER IMPOST A26 (PB)**  
 MONTEREY SHILOH (PB)  
 BUNDALEER IMPOST U4 (PB)  
 BUNDALEER IMPOST P1 (PB)

EBV ACC.	Calving				Growth & Maternal					Fertility	
	Calv. Ease Direct (%)	Calv. Ease Dtrs (%)	Gest. Len. (days)	Birth Wt. (kg)	200 Day Wt. (kg)	400 Day Wt. (kg)	600 Day Wt. (kg)	Mat. Cow Wt. (kg)	Milk (kg)	Scrot. Size (cm)	Days to Calv.
	-4.3	-	-	+5.5	+26	+37	+58	+56	+5	-0.2	-
	MPV	MPV	MPV	MPV	MPV	MPV	MPV	MPV	MPV	MPV	

EBV ACC.	300 KG Carcase						\$ Index		
	Carcase Wt. (kg)	Eye Muscle Area (cm <sup>2</sup> )	Rib Fat (mm)	Rump Fat (mm)	Retail Beef Yield (%)	IMF %	Long Fed Export (\$)	Super market (\$)	Heavy Grass Fed (\$)
	+ 33	+ 1.8	-1	-1.5	+ 1.6	-0.2	+\$ 30	+\$ 38	+\$ 37
	MPV	MPV	MPV	MPV	MPV	MPV			

Notes: A smaller framed bull that has a narrower head good shoulders and flat topline. By an outcross sire from a large capacity female. Very high early growth with high milk, carcase wt, EMA and RBV. (EBVs available on sale day)

Purchaser: \_\_\_\_\_ \$ \_\_\_\_\_

# LOT 17

# BUNDALEER DEBRIEF D46 (PB)

Born: 09/05/2008 Age: 20.4 months  
 Tattoo: JOS D46  
 Colour: Grey MG% : 100  
 NLIS : WKAM0344XBDD0046  
 NFID: 982 000118810749  
 Pen: 5



WEIGHT:  
 SCROTAL:  
 EMA:  
 FRAME SCORE:

WILLALOOKA RAMSAY (GR)  
 WILLALOOKA MAIN BREAK V856 (PB)  
 WILLALOOKA S895 (GR)  
**S: BUNDALEER CASH FLOW Y6 (PB)**  
 MONTEREY SHILOH (PB)  
 BUNDALEER MELISSA W16 (PB)  
 KOOJAN HILL MELISSA N26 (PB)

THE GLEN SANDBOY (PB)  
 MONTEREY MAJESTIC (PB)  
 WANDENA NELLA (PB)  
**D: BUNDALEER LOLITA T4 ET (PB)**  
 BUNDALEER KING 71 (PB)  
 BUNDALEER LOLITA P6 (PB)  
 BUNDALEER LOLITA 196 (PB)

EBV ACC.	Calving				Growth & Maternal					Fertility	
	Calv. Ease Direct (%)	Calv. Ease Dtrs (%)	Gest. Len. (days)	Birth Wt. (kg)	200 Day Wt. (kg)	400 Day Wt. (kg)	600 Day Wt. (kg)	Mat. Cow Wt. (kg)	Milk (kg)	Scrot. Size (cm)	Days to Calv.
	-	-	-	+ 3.1	+ 23	+ 32	+ 48	-	+ 5	+ 1.8	-
-	-	-	57%	53%	51%	54%	-	42%	45%	-	

EBV ACC.	300 KG Carcase						\$ Index		
	Carcase Wt. (kg)	Eye Muscle Area (cm <sup>2</sup> )	Rib Fat (mm)	Rump Fat (mm)	Retail Beef Yield (%)	IMF %	Long Fed Export (\$)	Super market (\$)	Heavy Grass Fed (\$)
	-	+ 1.7	-1.2	-1.7	+ 1.8	-0.3	+\$ 32	+\$ 35	+\$ 43
-	35%	44%	44%	41%	38%				

Notes: Puts a decent set of numbers together – moderate birth weight, milk and growth in-and-around the top 25%, plus scrotal, EMA and RBV in the top 5-10%. Dam has produced consistently and consequently we believe D46 would suit the British breed type herd intending to retain breeders.

Purchaser: \_\_\_\_\_ \$ \_\_\_\_\_

# LOT 18

# BUNDALEER DIABLO D15 (PB)

Born: 14/04/2008 Age: 21.2 months  
 Tattoo: JOS D15  
 Colour: Grey MG% : 100  
 NLIS : WKAM0344XBDD0015  
 NFID: 982 000118810316  
 Pen: 5



WEIGHT:  
 SCROTAL:  
 EMA:  
 FRAME SCORE:

WILLALOOKA RAMSAY (GR)  
 WILLALOOKA MAIN BREAK V856 (PB)  
 WILLALOOKA S895 (GR)  
**S: BUNDALEER CASH FLOW Y6 (PB)**  
 MONTEREY SHILOH (PB)  
 BUNDALEER MELISSA W16 (PB)  
 KOOJAN HILL MELISSA N26 (PB)

MONTEREY STAR CHIEF (PB)  
 MONTEREY STARLIGHT (PB)  
 MONTEREY BOUQUET N24 (PB)  
**D: BUNDALEER LOLITA W10 (PB)**  
 BUNDALEER ROUND UP R24 (PB)  
 BUNDALEER T. T. T30 (PB)  
 BUNDALEER T. T. R28 (PB)

EBV ACC.	Calving				Growth & Maternal					Fertility	
	Calv. Ease Direct (%)	Calv. Ease Dtrs (%)	Gest. Len. (days)	Birth Wt. (kg)	200 Day Wt. (kg)	400 Day Wt. (kg)	600 Day Wt. (kg)	Mat. Cow Wt. (kg)	Milk (kg)	Scrot. Size (cm)	Days to Calv.
	-	-	-	+ 2.7	+ 20	+ 29	+ 38	-	+ 4	+ 0.9	-
-	-	-	58%	55%	53%	55%	-	39%	46%	-	

EBV ACC.	300 KG Carcase						\$ Index		
	Carcase Wt. (kg)	Eye Muscle Area (cm <sup>2</sup> )	Rib Fat (mm)	Rump Fat (mm)	Retail Beef Yield (%)	IMF %	Long Fed Export (\$)	Super market (\$)	Heavy Grass Fed (\$)
	-	+ 1.2	+ 0.2	+ 0.2	+ 0.6	+ 0.1	+\$ 34	+\$ 32	+\$ 40
-	37%	47%	47%	42%	40%				

Notes: A bull suitable for heifers, offering moderate growth and birth weight coupled with positive fats, EMA and fertility. Dam is structurally very sound, good udder with a refined front end. **Guaranteed Heifer Bull**

Purchaser: \_\_\_\_\_ \$ \_\_\_\_\_

**LOT 19**

**BUNDALEER DERBY B45**

Born: 07/05/2008 Age: 20.5 months  
 Tattoo: JOS D45  
 Colour: Grey MG% : 100  
 NLIS : WKAM0344XBDD0045  
 NFID: 982 000118810206  
 Pen: 5



WEIGHT:  
 SCROTAL:  
 EMA:  
 FRAME SCORE:

WILLALOOKA PHARAOH P47 (PB)  
 WILLALOOKA UNITY U99 (PB)  
 WILLALOOKA ANNETTE R74 (RB)  
**S: BUNDALEER BOMBER B12 (PB)**  
 MONTEREY MAJESTIC (PB)  
 BUNDALEER TT Z9 (PB)  
 BUNDALEER T.T. R28 (PB)

BUNDALEER UNCLE SAM U18 (PB)  
 BUNDALEER X ROAD X37 (PB)  
 BUNDALEER REMEMBRANCE DAY (PB)  
**D: BUNDALEER LOLITA B37 (PB)**  
 BUNDALEER VOICE V9 (PB)  
 BUNDALEER LOLITA X1 (PB)

EBV ACC.	Calving				Growth & Maternal					Fertility	
	Calv. Ease Direct (%)	Calv. Ease Dtrs (%)	Gest. Len. (days)	Birth Wt. (kg)	200 Day Wt. (kg)	400 Day Wt. (kg)	600 Day Wt. (kg)	Mat. Cow Wt. (kg)	Milk (kg)	Scrot. Size (cm)	Days to Calv.
	-4.3	-	-0.4	+4.2	+26	+41	+60	+64	+4	-	-
MPV	MPV	MPV	MPV	MPV	MPV	MPV	MPV	MPV	MPV	MPV	

EBV ACC.	300 KG Carcase						\$ Index		
	Carcase Wt. (kg)	Eye Muscle Area (cm <sup>2</sup> )	Rib Fat (mm)	Rump Fat (mm)	Retail Beef Yield (%)	IMF %	Long Fed Export (\$)	Super market (\$)	Heavy Grass Fed (\$)
	+ 37	+ 2.0	-0.9	-1.3	+ 1.3	0.1	+\$ 35	+\$ 41	+\$ 43
MPV	MPV	MPV	MPV	MPV	MPV	MPV	MPV	MPV	

Notes: A good shaped bull with plenty of length and carcase attributes. Growth figures around the top 10% along with very high EMA and RBY.

Purchaser: \_\_\_\_\_ \$ \_\_\_\_\_

**LOT 20**

**BUNDALEER DEJA VU D48 (PB)**

Born: 15/04/2008 Age: 21.2 months  
 Tattoo: JOS D48  
 Colour: Grey MG% : 100  
 NLIS : WKAM0344XBDD0048  
 NFID: 982 000118810413  
 Pen: 5



WEIGHT:  
 SCROTAL:  
 EMA:  
 FRAME SCORE:

SPRINGWELL JAGUAR L138 (PB)  
 SPRINGWELL TRUMP CARD T58 (PB)  
 SPRINGWELL DAYA N95 (PB)  
**S: BUNDALEER POWER PLAY A2 (PB)**  
 BUNDALEER MAX M33 (PB)  
 BUNDALEER DAVINA Q48 (PB)  
 BUNDALEER DAVINA 201 (PB)

MONTEREY SHILOH (PB)  
 BUNDALEER WORLD CLASS W18 (PB)  
 BUNDALEER OPAL P4 (PB)  
**D: BUNDALEER KURI A44 (PB)**  
 BUNDALEER ROUND ONE R60 (PB)  
 BUNDALEER KURI T17 (PB)  
 BUNDALEER KURI R68 (PB)

EBV ACC.	Calving				Growth & Maternal					Fertility	
	Calv. Ease Direct (%)	Calv. Ease Dtrs (%)	Gest. Len. (days)	Birth Wt. (kg)	200 Day Wt. (kg)	400 Day Wt. (kg)	600 Day Wt. (kg)	Mat. Cow Wt. (kg)	Milk (kg)	Scrot. Size (cm)	Days to Calv.
	-	-	-	+5.8	+25	+35	+48	-	0	-	+1.4
ACC.	-	-	54%	49%	47%	50%	-	36%	41%	-	-

EBV ACC.	300 KG Carcase						\$ Index		
	Carcase Wt. (kg)	Eye Muscle Area (cm <sup>2</sup> )	Rib Fat (mm)	Rump Fat (mm)	Retail Beef Yield (%)	IMF %	Long Fed Export (\$)	Super market (\$)	Heavy Grass Fed (\$)
	-	+ 0.8	-0.5	-0.7	+ 0.9	-0.3	+\$ 10	+\$ 20	+\$ 23
ACC.	-	34%	44%	44%	39%	36%	-	-	-

Notes: Good shoulders, tight sheath and very respectable early growth figures (top 15-20%), also Scrotal is in the top 5%. His dam, like all our Word Class daughters, has an excellent udder and puts everything into her calf. (Maternal sister calf Lot 26)

Purchaser: \_\_\_\_\_ \$ \_\_\_\_\_

**LOT 21 BUNDALEER BIG BANG B5 (PB)**

OFFERING A MINIMUM OF 10 STRAWS OF SEMEN:

Purchaser to nominate number of straws

Purchaser: \_\_\_\_\_ \$ \_\_\_\_\_

**LOT 22 BUNDALEER BIG BANG B5 (PB)**

OFFERING A MINIMUM OF 25 STRAWS OF SEMEN:

Purchaser to nominate number of straws

Purchaser: \_\_\_\_\_ \$ \_\_\_\_\_



BUNDALEER BIG BANG B5



MONTEREY FREIGHT TRAIN B275

**LOT 23 MONTEREY FREIGHT TRAIN B275 (PB)**

OFFERING A MINIMUM OF 10 STRAWS OF SEMEN:

Purchaser to nominate number of straws

Purchaser: \_\_\_\_\_ \$ \_\_\_\_\_

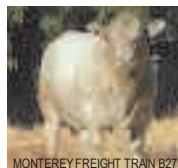
**LOT 24 MONTEREY FREIGHT TRAIN B275 (PB)**

OFFERING A MINIMUM OF 10 STRAWS OF SEMEN:

Purchaser to nominate number of straws

Purchaser: \_\_\_\_\_ \$ \_\_\_\_\_

**LOT 25 4 EMBRYOS—BUNDALEER JOYCE U8 (PB)**



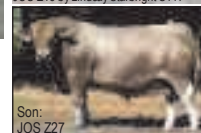
MONTEREY FREIGHT TRAIN B275



BUNDALEER JOYCE U8



Son:  
JOS E15 by Lindsay Starbright S117



Son:  
JOS Z27

OFFERING 4 'A' GRADE EMBRYOS OUT OF BUNDALEER JOYCE U8.

Embryos to be collected between January-June 2010. Choice of sire available—we are recommending B275.

Figures below are Mid Parent Values for B275 x U8

- |   |                                   |
|---|-----------------------------------|
| MONTEREY SUNDOWNER (PB)                       | MONTEREY CENTURY TW (PB)          |
| MONTEREY FREIGHT TRAIN (PB)                   | MONTEREY SHILOH (PB)              |
| BUNDALEER OPAL P27 (PB)                       | MONTEREY MAGNOLIA 3RD (PB)        |
| <b>S: MONTEREY FREIGHT TRAIN B275 TW (PB)</b> | <b>D: BUNDALEER JOYCE U8 (PB)</b> |
| ORCADIA PARK SYNDICATE (PB)                   | BUNDALEER PROPHET P2 (PB)         |
| MONTEREY MELANIE (PB)                         | BUNDALEER JOYCE R16 (PB)          |
| WANDENA QUIT (PB)                             | KOOJAN HILL JOYCE N12 (PB)        |

	Calving				Growth & Maternal				Fertility		
	Calv. Ease Direct (%)	Calv. Ease Dtrs (%)	Gest. Len. (days)	Birth Wt. (kg)	200 Day Wt. (kg)	400 Day Wt. (kg)	600 Day Wt. (kg)	Mat. Cow Wt. (kg)	Milk (kg)	Scrot. Size (cm)	Days to Calv.
EBV	-5.3	-0.8	-	+ 5.3	+ 34	+ 52	+ 72	-	+ 8	-	-
ACC.	MPV	MPV	MPV	MPV	MPV	MPV	MPV	MPV	MPV	MPV	MPV

	300 KG Carcass					\$ Index			
	Carcass Wt. (kg)	Eye Muscle Area (cm <sup>2</sup> )	Rib Fat (mm)	Rump Fat (mm)	Retail Beef Yield (%)	IMF %	Long Fed Export (\$)	Super market (\$)	Heavy Grass Fed (\$)
EBV	-	+ 2.4	-1.4	-1.9	+ 2.2	-0.5	+\$ 31	+\$ 46	+\$ 46
ACC.	MPV	MPV	MPV	MPV	MPV	MPV	MPV	MPV	MPV

Notes: Elite genetic package—from one of the breed's highest growth females. Bundaleer Joyce is an exceptional female and has produced a number of outstanding progeny—combining phenotype and performance figures. Sons have sold to \$9500 (JOS Z27) and her daughters are large volume, thick butted females with plenty of milk.

Purchaser: \_\_\_\_\_ \$ \_\_\_\_\_

**LOT 26**

**BUNDALEER KURI E32 (PB)**

Born: 18/04/2009 Age: 9.1months  
 Tattoo: JOS E32  
 Colour: Grey MG% : 100  
 NLIS :  
 NFID:  
 Pen: 6



MONTEREY MAJESTIC LAD (PB)  
 MONTEREY MILLENNIUM (PB)  
 MONTEREY MAGNOLIA 2ND (PB)  
**S: ABROLIS GREYS AMBROSE ET (PB)**  
 MONTEREY TREMENDOUS (PB)  
 ABROLIS GREYS MISS TREMENDOUS ET (PB)  
 MONTEREY MISS MADONNA (PB)

MONTEREY SHILOH (PB)  
 BUNDALEER WORLD CLASS W18 (PB)  
 BUNDALEER OPAL P4 (PB)  
**D: BUNDALEER KURI A44 (PB)**  
 BUNDALEER ROUND ONE R60 (PB)  
 BUNDALEER KURI T17 (PB)  
 BUNDALEER KURI R68 (PB)

	Calving				Growth & Maternal					Fertility	
	Calv. Ease Direct	Calv. Ease Dtrs	Gest. Len.	Birth Wt.	200 Day Wt.	400 Day Wt.	600 Day Wt.	Mat. Cow Wt.	Milk (kg)	Scrot. Size (cm)	Days to Calv.
	(%)	(%)	(days)	(kg)	(kg)	(kg)	(kg)	(kg)	(cm)		
EBV	-6.9	-	-	+6.3	+31	+47	+61	+51	+6	+1.4	-
ACC.	MPV	MPV	MPV	MPV	MPV	MPV	MPV	MPV	MPV	MPV	MPV

	300 KG Carcase						\$ Index		
	Carcase Wt.	Eye Muscle Area	Rib Fat	Rump Fat	Retail Beef Yield	IMF %	Long Fed Export	Super market	Heavy Grass Fed
	(kg)	(cm <sup>2</sup> )	(mm)	(mm)	(%)	%	(\$)	(\$)	(\$)
EBV	+35	+1.6	-0.4	-0.5	+1.3	-0.3	+\$28	+\$37	+\$41
ACC.	MPV	MPV	MPV	MPV	MPV	MPV			

Notes: Terrific volume shape and type - a real show stopper and will develop into a sensational female. Out of our Kuri family that done

Purchaser: \_\_\_\_\_ \$ \_\_\_\_\_

**LOT 27**

**BUNDALEER LOLITA E30 (PB)**

Born: 13/04/2009 Age: 9.2months  
 Tattoo: JOS E30  
 Colour: Grey MG% : 100  
 NLIS :  
 NFID:  
 Pen: 6



SPRINGWELL JAGUAR L138 (PB)  
 SPRINGWELL TRUMP CARD T58 (PB)  
 SPRINGWELL DAYA N95 (PB)  
**S: BUNDALEER POWER PLAY A2 (PB)**  
 BUNDALEER MAX M33 (PB)  
 BUNDALEER DAVINA Q48 (PB)  
 BUNDALEER DAVINA 201 (PB)

WILLALOOKA RAMSAY (GR)  
 WILLALOOKA MAIN BREAK V856 (PB)  
 WILLALOOKA S695 (GR)  
**D: BUNDALEER LOLITA A16 (PB)**  
 BUNDALEER PAYDAY P43 (PB)  
 BUNDALEER LOLITA S125 ET (PB)  
 BUNDALEER LOLITA P6 (PB)

	Calving				Growth & Maternal					Fertility	
	Calv. Ease Direct	Calv. Ease Dtrs	Gest. Len.	Birth Wt.	200 Day Wt.	400 Day Wt.	600 Day Wt.	Mat. Cow Wt.	Milk (kg)	Scrot. Size (cm)	Days to Calv.
	(%)	(%)	(days)	(kg)	(kg)	(kg)	(kg)	(kg)	(kg)	(cm)	
EBV	-5	+0.1	-	+4.6	+24	+35	+52	+56	-2	+0.8	-
ACC.	MPV	MPV	MPV	MPV	MPV	MPV	MPV	MPV	MPV	MPV	MPV

	300 KG Carcase						\$ Index		
	Carcase Wt.	Eye Muscle Area	Rib Fat	Rump Fat	Retail Beef Yield	IMF %	Long Fed Export	Super market	Heavy Grass Fed
	(kg)	(cm <sup>2</sup> )	(mm)	(mm)	(%)	%	(\$)	(\$)	(\$)
EBV	+27	+0.7	-0.6	-0.8	+0.7	+0.1	+\$23	+\$30	+\$32
ACC.	MPV	MPV	MPV	MPV	MPV	MPV			

Notes: An attractive young heifer that has plenty of eye appeal. Out of one of our most complete Mainbreak daughters by Powerply - this mix did exceptionally well at the 2008 PRS.

Purchaser: \_\_\_\_\_ \$ \_\_\_\_\_

**LOT 28**

**BUNDALEER OPAL E14 (PB)**

Born: 22/03/2009 Age: 10months  
 Tattoo: JOS E14  
 Colour: Grey MG% : 100  
 NLIS :  
 NFID:  
 Pen: 6



Picture: Dam Bundaleer Opal X27

MONTEREY STAR CHIEF (PB)  
 MONTEREY STARLIGHT (PB)  
 MONTEREY BOUQUET N24 (PB)  
**S: MONTEREY GOTCHA (PB)**  
 BUNDALEER MAX M33 (PB)  
 BUNDALEER OPAL Q66 (PB)  
 BUNDALEER OPAL 54 (PB)

MONTEREY SHILOH (PB)  
 BUNDALEER UNCLE SAM U18 (PB)  
 BUNDALEER LOLITA P6 (PB)  
**D: BUNDALEER OPAL X27 (PB)**  
 MONTEREY STAR CHIEF (PB)  
 BUNDALEER OPAL S122 ET (PB)  
 BUNDALEER OPAL P4 (PB)

	Calving				Growth & Maternal					Fertility	
	Calv. Ease Direct	Calv. Ease Dtrs (%)	Gest. Len. (days)	Birth Wt. (kg)	200 Day Wt. (kg)	400 Day Wt. (kg)	600 Day Wt. (kg)	Mat. Cow Wt. (kg)	Milk (kg)	Scrot. Size (cm)	Days to Calv.
	(%)	(%)	(days)	(kg)	(kg)	(kg)	(kg)	(kg)	(kg)	(cm)	
EBV	-6.2	-2.7	-2	+5.4	+27	+42	+67	+73	+2	+0.5	-0.2
ACC.	MPV	MPV	MPV	MPV	MPV	MPV	MPV	MPV	MPV	MPV	MPV

	300 KG Carcase					\$ Index			
	Carcase Wt. (kg)	Eye Muscle Area (cm <sup>2</sup> )	Rib Fat (mm)	Rump Fat (mm)	Retail Beef Yield (%)	IMF %	Long Fed Export (\$)	Super market (\$)	Heavy Grass Fed (\$)
	(kg)	(cm <sup>2</sup> )	(mm)	(mm)	(%)	%	(\$)	(\$)	(\$)
EBV	+35	+1.9	-0.4	-0.6	+1.2	0.0	+\$28	+\$39	+\$40
ACC.	MPV	MPV	MPV	MPV	MPV	MPV			

Notes: Plenty of potential here. Good structure, plenty of length and very good MPVs. Her pedigree blends some of the state's most successful genetics and we expect E14 to grow into a top female. Sells with two straws of Melaleuca Chaser C267.

Purchaser: \_\_\_\_\_ \$ \_\_\_\_\_

**LOT 29**

**BUNDALEER OPAL E66 (PB)**

Born: 02/08/2009 Age: 5.6months  
 Tattoo: JOS E66  
 Colour: Silver MG% : 100  
 NLIS :  
 NFID:  
 Pen: 6



Picture: Bundaleer Birthright B69

WILLALOOKA PHARAOH P47 (PB)  
 MONTEREY STRATOSPHERE ET (PB)  
 MONTEREY MISS MAGNOLIA S90 (PB)  
**S: BUNDALEER BIRTHRIGHT B69 (PB)**  
 ORCADIA PARK SYNDICATE (PB)  
 SPRINGWELL ANN N34 (PB)  
 SPRINGWELL ANN 1196 (PB)

MONTEREY SHILOH (PB)  
 BUNDALEER WORLD CLASS W18 (PB)  
 BUNDALEER OPAL P4 (PB)  
**D: BUNDALEER LOLITA B63 (PB)**  
 BUNDALEER UNCLE SAM U18 (PB)  
 BUNDALEER LOLITA W25 (PB)  
 BUNDALEER LOLITA S14 (PB)

	Calving				Growth & Maternal					Fertility	
	Calv. Ease Direct	Calv. Ease Dtrs (%)	Gest. Len. (days)	Birth Wt. (kg)	200 Day Wt. (kg)	400 Day Wt. (kg)	600 Day Wt. (kg)	Mat. Cow Wt. (kg)	Milk (kg)	Scrot. Size (cm)	Days to Calv.
	(%)	(%)	(days)	(kg)	(kg)	(kg)	(kg)	(kg)	(kg)	(cm)	
EBV	-	-	-	+5.8	+33	+47	+65	+68	+6	+1.0	-
ACC.	MPV	MPV	MPV	MPV	MPV	MPV	MPV	MPV	MPV	MPV	MPV

	300 KG Carcase					\$ Index			
	Carcase Wt. (kg)	Eye Muscle Area (cm <sup>2</sup> )	Rib Fat (mm)	Rump Fat (mm)	Retail Beef Yield (%)	IMF %	Long Fed Export (\$)	Super market (\$)	Heavy Grass Fed (\$)
	(kg)	(cm <sup>2</sup> )	(mm)	(mm)	(%)	%	(\$)	(\$)	(\$)
EBV	-	+1.3	-1.1	-1.5	+1.7	-0.5	+\$14	+\$30	+\$31
ACC.	MPV	MPV	MPV	MPV	MPV	MPV			

Notes: Only a youngster displaying excellent potential. Blends structure, phenotype and figures into a complete package. Sells with two straws of Melaleuca Chaser C267.

Purchaser: \_\_\_\_\_ \$ \_\_\_\_\_

**LOT 30**

**BUNDALEER KURI A62 (PB)**

Born: 12/06/2005 Age: 4.6 years  
 Tattoo: JOS A62  
 Colour: Silver MG% : 100  
 NLIS : WJAM0019XBA00062  
 NFID: 982 000000178580  
 Pen: 7



Calv. JOS E28  
 DOB: 10/4/09  
 Sire:  
 B. Power Play A2

WILLALOOKA RAMSAY (GR)  
 WILLALOOKA MAIN BREAK V856 (PB)  
 WILLALOOKA S695 (GR)  
**S: BUNDALEER CASH FLOW Y6 (PB)**  
 MONTEREY SHILOH (PB)  
 BUNDALEER MELISSA W16 (PB)  
 KOOJAN HILL MELISSA N26 (PB)

BUNDALEER MAX M33 (PB)  
 BUNDALEER PAYDAY P43 (PB)  
 BUNDALEER DJANNA M04 (PB)  
**D: BUNDALEER KURI X14 (PB)**  
 BUNDALEER ROUND ONE R60 (PB)  
 BUNDALEER KURI T17 (PB)  
 BUNDALEER KURI R68 (PB)

EBV ACC.	Calving				Growth & Maternal					Fertility	
	Calv. Ease Direct (%)	Calv. Ease Dtrs (%)	Gest. Len. (days)	Birth Wt. (kg)	200 Day Wt. (kg)	400 Day Wt. (kg)	600 Day Wt. (kg)	Mat. Cow Wt. (kg)	Milk (kg)	Scrot. Size (cm)	Days to Calv.
	-8.1	-	-	+ 5.3	+ 28	+ 40	+ 54	+ 44	+ 5	-	-
36%	-	-	72%	67%	63%	67%	58%	37%	-	-	

EBV ACC.	300 KG Carcase						\$ Index		
	Carcase Wt. (kg)	Eye Muscle Area (cm <sup>2</sup> )	Rib Fat (mm)	Rump Fat (mm)	Retail Beef Yield (%)	IMF %	Long Fed Export (\$)	Super market (\$)	Heavy Grass Fed (\$)
	+ 30	+ 1.5	-1.1	-1.6	+ 1.7	-0.4	+\$ 18	+\$ 28	+\$ 29
55%	42%	59%	59%	52%	48%				

Notes: A large volume, easy doing female that is typical of Cash Flow daughters, that is, structurally sound, wedge shaped, easy doing and milky. Performance figures in the top 10 percent for 200, 400 Dxy Growth and RBY, along with high milk, Carcase Wt. and EMA. Really bends the Mature Cow Weight without sacrificing growth rate. A stud female that is stepping into the prime of her reproductive life and she is joined to our new sire, Monterey Freight Train B275 (PD: 24 weeks). A very attractive 3 in 1 unit.

Purchaser: \_\_\_\_\_ \$ \_\_\_\_\_

**LOT 31**

**BUNDALEER OPAL Z13 (PB)**

Born: 27/04/2004 Age: 5.7 years  
 Tattoo: JOS Z13  
 Colour: Silver MG% : 100  
 NLIS :  
 NFID:  
 Pen: 7

V D A R NEW TREND 315 (GR) (B)  
 WILLALOOKA RAMSAY (GR)  
 WILLALOOKA AGNES K207 (PB)  
**S: WILLALOOKA MAIN BREAK V856 (PB)**  
 WILLALOOKA P19 (GR)  
 WILLALOOKA S695 (GR)  
 WILLALOOKA AM Q678 (PB)

ORCADIA PARK REMBRANDT (PB)  
 ORCADIA PARK DESTINY L41 ET (PB)  
 ORCADIA PARK MINETTE 1002 (PB)  
**D: BUNDALEER EMERALD Q14 (PB)**  
 KOOJAN HILL DEMPSEY (PB)  
 BUNDALEER OPAL 64 (PB)  
 BUNDALEER OPAL 139 (PB)

EBV ACC.	Calving				Growth & Maternal					Fertility	
	Calv. Ease Direct (%)	Calv. Ease Dtrs (%)	Gest. Len. (days)	Birth Wt. (kg)	200 Day Wt. (kg)	400 Day Wt. (kg)	600 Day Wt. (kg)	Mat. Cow Wt. (kg)	Milk (kg)	Scrot. Size (cm)	Days to Calv.
	-9.5	-	-0.1	+ 7.0	+ 33	+ 48	+ 67	+ 65	+ 5	+ 0.1	-
42%	-	51%	76%	70%	68%	72%	61%	52%	51%	-	

EBV ACC.	300 KG Carcase						\$ Index		
	Carcase Wt. (kg)	Eye Muscle Area (cm <sup>2</sup> )	Rib Fat (mm)	Rump Fat (mm)	Retail Beef Yield (%)	IMF %	Long Fed Export (\$)	Super market (\$)	Heavy Grass Fed (\$)
	+ 38	+ 2.1	+ 0.3	+ 0.3	+ 0.9	+ 0.6	+\$ 36	+\$ 41	+\$ 45
60%	47%	65%	65%	58%	52%				

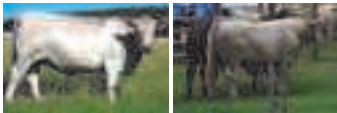
Notes: (Replacement lot for JOS A36) Another very feminine, long bodied Mainbreak daughter with impressive capacity (approx. 850kg) and exceptional figures. That is, top 1-5% for 200, 400, 600 day growth, Carcase Wt, EMA and IMF. She has positive back fat and high Milk and Index Values – these figures don't come along every day. Her dam is a maternal sister to Southend Westrowan's dam, one of Southend's most influential sires. A female that puts it all together and will be one of the top females auctioned in the breed for 2010. Joined to Bundaleer BB King B4 (PD: 32 weeks) Sells with two straws of Monterey Freight Train B275.

Purchaser: \_\_\_\_\_ \$ \_\_\_\_\_

# LOT 32

# BUNDALEER LOLITA W12 (PB)

Born: 25/05/2001 Age: 8.6 years  
 Tattoo: JOS W12  
 Colour: Silver MG% : 100  
 NLIS : WKAM0344XBAW0012  
 NFID: 982 000047215016  
 Pen: 7



Daughter: JOS A50 Son: JOS C15

ORCADIA PARK CENTURY (PB)  
 MONTEREY CENTURY TW (PB)  
 MONTEREY SHOWGIRL 9TH (PB)  
**S: MONTEREY SHILOH (PB)**  
 MONTEREY LUSTY (PB)  
 MONTEREY MAGNOLIA 3RD (PB)  
 MONTEREY MAGNOLIA 2ND (PB)

THE GLEN SANDBOY (PB)  
 MONTEREY MAJESTIC (PB)  
 WANDENELLA (PB)  
**D: BUNDALEER LOLITA T4 ET (PB)**  
 BUNDALEER KING 71 (PB)  
 BUNDALEER LOLITA P6 (PB)  
 BUNDALEER LOLITA 196 (PB)

EBV ACC.	Calving				Growth & Maternal					Fertility	
	Calv. Ease Direct (%)	Calv. Ease Dtrs (%)	Gest. Len. (days)	Birth Wt. (kg)	200 Day Wt. (kg)	400 Day Wt. (kg)	600 Day Wt. (kg)	Mat. Cow Wt. (kg)	Milk (kg)	Scrot. Size (cm)	Days to Calv.
	-3.5	-1.1	-0.6	+2.8	+22	+25	+40	+51	+3	+0.9	-2.8
54%	47%	59%	81%	75%	74%	77%	74%	65%	60%	39%	

EBV ACC.	300 KG Carcase						\$ Index		
	Carcase Wt. (kg)	Eye Muscle Area (cm <sup>2</sup> )	Rib Fat (mm)	Rump Fat (mm)	Retail Beef Yield (%)	IMF %	Long Fed Export (\$)	Super market (\$)	Heavy Grass Fed (\$)
	+ 27	+ 2.2	-0.3	-0.5	+ 1.5	-0.2	+\$ 23	+\$ 28	+\$ 36
66%	53%	68%	68%	62%	58%				

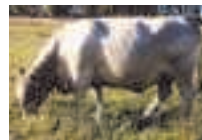
Notes: A cracking Murray Grey female and is the first Shiloh daughter we have offered for sale. She has exceptional length, fleshing and overall constitution. Moderate Birth Wt. and high EMA and Days to Calving. Shiloh remains one of the most influential paddock sires we have used and his daughters have bred exceptionally well. Joined to Bundaleer True Blue A68 (PD: 30 weeks)

Purchaser: \_\_\_\_\_ \$ \_\_\_\_\_

# LOT 32

# MARTINDALE TOPSY T42 (PB)

Born: 28/04/1998 Age: 11.7 years  
 Tattoo: MZ T42  
 Colour: Silver MG% : 100  
 NLIS : WKAM0344XEAT0042  
 NFID: 982 000045845632  
 Pen: 7



LOCHABER-BRAES DIPLOMAT (PB)  
 BUNDALEER MAX M33 (PB)  
 THE FAVOURITE FREDERIKA IMP NZ (GR)  
**S: BUNDALEER PAYDAY P43 (PB)**  
 BUNDALEER JONES 217 (PB)  
 BUNDALEER DIANNA M04 (PB)  
 BUNDALEER LOLITA 192 (PB)

TORRENS VALE BASIL (PB)  
 MARJON CAVALIER (PB)  
 MARJON ANNABEL (PB)  
**D: MARTINDALE MOPPY (PB)**  
 KOOJAN HILL SILVER CREST (PB)  
 SPRINGWELL FIFI 951 (PB)  
 ILLAWONG PARISIENNE (PB)

EBV ACC.	Calving				Growth & Maternal					Fertility	
	Calv. Ease Direct (%)	Calv. Ease Dtrs (%)	Gest. Len. (days)	Birth Wt. (kg)	200 Day Wt. (kg)	400 Day Wt. (kg)	600 Day Wt. (kg)	Mat. Cow Wt. (kg)	Milk (kg)	Scrot. Size (cm)	Days to Calv.
	-10.5	-4.5	-0.4	+6.1	+25	+34	+44	+32	-3	0.0	+1.5
55%	48%	56%	81%	75%	72%	73%	62%	61%	62%	37%	

EBV ACC.	300 KG Carcase						\$ Index		
	Carcase Wt. (kg)	Eye Muscle Area (cm <sup>2</sup> )	Rib Fat (mm)	Rump Fat (mm)	Retail Beef Yield (%)	IMF %	Long Fed Export (\$)	Super market (\$)	Heavy Grass Fed (\$)
	+ 21	+ 1.1	-0.3	-0.6	+ 0.9	0.0	\$ 0	+\$ 11	+\$ 6
63%	50%	63%	63%	57%	45%				

Notes: Superb structure, constitution, performance and has been a past trailleader for growth. We have had an extraordinary run from our Payday daughters and Topsy is a wonderful testament to the bull and the breed. Also worth noting is Koojan Hill Silver Crest on the maternal side. We have retained her only two daughters that are shaping up into fast growing moderate framed (FS 6) females. All her sons have sold well and we have retained a grandson in the stud. We anticipate the calf in utero will be outstanding. Paddock joined (PD: 14 weeks) to B. BB King B4. One of three **TOP TEN FEMALES** we are selling this year.

Purchaser: \_\_\_\_\_ \$ \_\_\_\_\_

**LOT 34**

**BUNDALEER MELISSA R137 (PB)**

Born: 07/11/1996 Age: 13.2 years  
 Tattoo: JOS R137  
 Colour: Silver MG% : 100 Pen: 8  
 NLIS : WKAM0344XBAR0137  
 NFID: 982 000047215066



Son: JOS B9

Son: JOS C8

LOCHABER-BRAES DIPLOMAT (PB)  
 BUNDALEER MAX M33 (PB)  
 THE FAVOURITE FREDERKA IMP NZ(GR)  
**S: BUNDALEER PAYDAY P43 (PB)**  
 BUNDALEER JONES 217 (PB)  
 BUNDALEER DIANNA M04 (PB)  
 BUNDALEER LOLITA 192 (PB)

ORCADIA PARK DIPLOMAT (PB)  
 LOCHABER-BRAES DIPLOMAT (PB)  
 ORCADIA PARK VELMA 4TH (PB)  
**D: KOOJAN HILL MELISSA N26 (PB)**  
 ORCADIA PARK REMBRANDT (PB)  
 KOOJAN HILL MELISSA 734 (PB)  
 KOOJAN HILL MELISSA 14TH (PB)

EBV ACC.	Calving				Growth & Maternal				Fertility		
	Calv. Ease Direct (%)	Calv. Ease Dtrs (%)	Gest. Len. (days)	Birth Wt. (kg)	200 Day Wt. (kg)	400 Day Wt. (kg)	600 Day Wt. (kg)	Mat. Cow Wt. (kg)	Milk (kg)	Scrot. Size (cm)	Days to Calv.
	-5.9	-2.9	-1.7	+2.7	+16	+22	+24	+8	+1	+0.7	+0.3
57%	51%	62%	80%	74%	74%	76%	76%	69%	66%	42%	

EBV ACC.	300 KG Carcase						\$ Index		
	Carcase Wt. (kg)	Eye Muscle Area (cm <sup>2</sup> )	Rib Fat (mm)	Rump Fat (mm)	Retail Beef Yield (%)	IMF %	Long Fed Export (\$)	Super market (\$)	Heavy Grass Fed (\$)
	+14	+1.4	-0.8	-1.1	+1.6	-0.7	+\$2	+\$8	+\$8
65%	51%	59%	59%	55%	50%				

Notes: A powerhouse female that has been one of our bread-and-butter breeders over the past decade. A proven matriarch that continues to impress. Progeny sales exceed \$30,000 with sons selling to \$7500 and a daughter topped our Inaugural Production Sale. Her grey bull calf, Bundaleer Emboss E51 (PB) (DOB 19.5.09) is a well balanced calf with a bit of extra length (Sire: Abrolis Greys Ambrose (PB) ET) will be a very saleable bull in 12 months time. Joined to Cash Flow (PD: 9 weeks) A **TOP TEN FEMALE**

Purchaser: \_\_\_\_\_ \$ \_\_\_\_\_

**LOT 35**

**BUNDALEER LOLITA R147 (PB)**

Born: 06/12/1996 Age: 13.1 years  
 Tattoo: JOS R147  
 Colour: Grey MG% : 100  
 NLIS : WKAM0344XBAR0147  
 NFID: 982 000047214790  
 Pen: 8

ORCADIA PARK CENTURY (PB)  
 ORCADIA PARK SYNDICATE (PB)  
 ORCADIA PARK SAPHIRE 2ND (PB)  
**S: MONTEREY CARTEL (PB)**  
 THE CROFT KERNEWEK (PB)  
 MONTEREY MANNEQUIN (PB)  
 MONTEREY SHOWGIRL 4TH (PB)

BUNDALEER LARWOOD 199 (PB)  
 BUNDALEER KING 71 (PB)  
 BUNDALEER DAVINA 166 (PB)  
**D: BUNDALEER LOLITA P6 (PB)**  
 ORCADIA PARK REMBRANDT (PB)  
 BUNDALEER LOLITA 196 (PB)  
 SOVEREIGN LOLITA 2ND (PB)

EBV ACC.	Calving				Growth & Maternal				Fertility		
	Calv. Ease Direct (%)	Calv. Ease Dtrs (%)	Gest. Len. (days)	Birth Wt. (kg)	200 Day Wt. (kg)	400 Day Wt. (kg)	600 Day Wt. (kg)	Mat. Cow Wt. (kg)	Milk (kg)	Scrot. Size (cm)	Days to Calv.
	-3.8	-0.3	+0.8	+4.3	+23	+34	+59	+84	+5	+0.4	-5.1
58%	54%	60%	82%	78%	78%	80%	79%	79%	63%	45%	

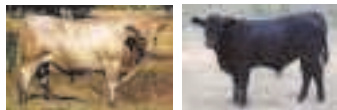
EBV ACC.	300 KG Carcase						\$ Index		
	Carcase Wt. (kg)	Eye Muscle Area (cm <sup>2</sup> )	Rib Fat (mm)	Rump Fat (mm)	Retail Beef Yield (%)	IMF %	Long Fed Export (\$)	Super market (\$)	Heavy Grass Fed (\$)
	+34	+0.9	-0.4	-0.6	+0.6	+0.3	+\$33	+\$39	+\$49
70%	53%	66%	66%	61%	56%				

Notes: They don't get any more consistent than R147, she has strung together a standout line of progeny with seven daughters breeding in stud herds in WA. Overall, Lolita is a large volume, large framed female with some excellent performance figures that remain at the top end of the breed. We rate R147 very highly and consider that her last few calves will lift the genetic profile of any herd. Has a tidy Cash Flow bull calf at foot, Bundaleer Edwurdian E45 (PB) (DOB 1.5.09) and joined to Monterey Freight Train B275 (PD: 18 weeks). A **TOP TEN FEMALE**

Purchaser: \_\_\_\_\_ \$ \_\_\_\_\_

## LOT 36 BUNDALEER ESMERALDA R19 (PB)

Born: 16/03/1996 Age: 13.8 years  
 Tattoo: JOS R19  
 Colour: Grey MG% : 100  
 NLIS : WKAM0344XBAR0019  
 NFID: 982 000046778884



Son: JOS C14      Calf at foot: JOS E42

ORCADIA PARK DIPLOMAT (PB)  
 LOCHABER-BRAES DIPLOMAT (PB)  
 ORCADIA PARK VELMA 4TH (PB)  
**S: MONTEREY STAR CHIEF (PB)**  
 ORCADIA PARK REMBRANDT (PB)  
 MONTEREY MARTINI (PB)  
 MONTEREY SHOWGIRL 6TH (PB)

WOODBOURN PEACE MAKER (PB)  
 WOODBOURN WALLY (PB)  
 PARKNOOK KAREN (PB)  
**D: KOOJAN HILL ESMERALDA K48 (PB)**  
 BRIELLEN NAVAJO (PB)  
 KOOJAN HILL ESMERALDA (PB)  
 THE GLEN ESMERALDA 59TH (PB)

	Calving				Growth & Maternal					Fertility	
	Calv. Ease Direct (%)	Calv. Ease Dtrs (%)	Gest. Len. (days)	Birth Wt. (kg)	200 Day Wt. (kg)	400 Day Wt. (kg)	600 Day Wt. (kg)	Mat. Cow Wt. (kg)	Milk (kg)	Scrot. Size (cm)	Days to Calv.
	EBV	-0.5	-6.3	-1.4	+2.0	+6	+8	+11	-13	+9	+0.6
ACC.	60%	58%	68%	84%	78%	77%	77%	75%	73%	65%	47%

	300 KG Carcase						\$ Index		
	Carcase Wt. (kg)	Eye Muscle Area (cm <sup>2</sup> )	Rib Fat (mm)	Rump Fat (mm)	Retail Beef Yield (%)	IMF %	Long Fed Export (\$)	Super market (\$)	Heavy Grass Fed (\$)
	EBV	-4	+ 0.2	+ 1.1	+ 1.7	-0.7	+0.2	+\$ 11	+\$ 9
ACC.	66%	52%	59%	59%	56%	52%			

Notes: A Koojan Hill bloodline female we rate highly and again has bred exceptionally well. Her daughters possess excellent type and presence and we have over a dozen of her descendants breeding in the herd. A strapping True Blue bull calf at foot, Bundaleer Essential E42 (BF) (DOB 26.4.09) and a top joining, Monterey Freight Train B275 (PD: 16 weeks) make R19 an exceptional 3 in 1 outfit.

Purchaser: \_\_\_\_\_ \$ \_\_\_\_\_

## LOT 37 BUNDALEER ESMERALDA D10 (PB)

Born: 12/04/2008 Age: 21.3months  
 Tattoo: JOS D10  
 Colour: Silver MG% : 100  
 NLIS : WKAM0344XBDD0010  
 NFID: 982 000118810525  
 Pen: 9

SPRINGWELL JAGUAR L138 (PB)  
 SPRINGWELL TRUMP CARD T58 (PB)  
 SPRINGWELL DAVIA N95 (PB)  
**S: BUNDALEER POWER PLAY A2 (PB)**  
 BUNDALEER MAX M33 (PB)  
 BUNDALEER DAVINA Q48 (PB)  
 BUNDALEER DAVINA 201 (PB)

WILLALOOKA RAMSAY (GR)  
 WILLALOOKA MAIN BREAK V856 (PB)  
 WILLALOOKA S695 (GR)  
**D: BUNDALEER ESMERALDA Y1 (PB)**  
 BUNDALEER PROPHET P2 (PB)  
 BUNDALEER ESMERALDA W11 (PB)  
 BUNDALEER ESMERALDA U14 (PB)

	Calving				Growth & Maternal					Fertility	
	Calv. Ease Direct (%)	Calv. Ease Dtrs (%)	Gest. Len. (days)	Birth Wt. (kg)	200 Day Wt. (kg)	400 Day Wt. (kg)	600 Day Wt. (kg)	Mat. Cow Wt. (kg)	Milk (kg)	Scrot. Size (cm)	Days to Calv.
	EBV	-	-	-	+1.2	+16	+26	+41	-	-2	-
ACC.	-	-	-	54%	50%	48%	52%	-	40%	-	-

	300 KG Carcase						\$ Index		
	Carcase Wt. (kg)	Eye Muscle Area (cm <sup>2</sup> )	Rib Fat (mm)	Rump Fat (mm)	Retail Beef Yield (%)	IMF %	Long Fed Export (\$)	Super market (\$)	Heavy Grass Fed (\$)
	EBV	-	+ 0.9	+0.4	+0.5	+0.1	+0.6	+\$ 41	+\$ 36
ACC.	-	35%	45%	45%	42%	38%			

Notes: A young, attractive heifer that bends the growth curve, has positive fat and excellent index values. Calf in utero will have exceptional figures and will offer a cross section of WA genetics. Joined to Melaleuca Chaser C267 (PD: 24 weeks)

Purchaser: \_\_\_\_\_ \$ \_\_\_\_\_

## LOT 38 BUNDALEER REMEMBRANCE D47 (PB)

Born: 14/05/2008 Age: 20.2months  
 Tattoo: JOS D47  
 Colour: Silver MG% : 1  
 NLIS : WKAM0344XBDD0047  
 NFID: 982 000118810595  
 Pen: 9

SPRINGWELL JAGUAR L138 (PB) WILLALOOKA PHARAOH P47 (PB)  
 SPRINGWELL TRUMP CARD T58 (PB) BUNDALEER WALK ABOUT W3 TW (PB)  
 SPRINGWELL DAIYA N95 (PB) BUNDALEER MPOST P1 (PB)  
**S: BUNDALEER POWER PLAY A2 (PB)** **D: BUNDALEER REMEMBRANCE Y39 (PB)**  
 BUNDALEER MAX M33 (PB) MONTEREY SHILOH (PB)  
 BUNDALEER DAVINA Q48 (PB) BUNDALEER REMEMBRANCE V21 (PB)  
 BUNDALEER DAVINA 201 (PB) BUNDALEER REMEMBRANCE DAY (PB)

	Calving				Growth & Maternal					Fertility	
	Calv. Ease Direct	Calv. Ease Dtrs	Gest. Len. (days)	Birth Wt. (kg)	200 Day Wt. (kg)	400 Day Wt. (kg)	600 Day Wt. (kg)	Mat. Cow Wt. (kg)	Milk (kg)	Scrot. Size (cm)	Days to Calv.
	(%)	(%)									
EBV	-	-	-	+3.0	+23	+29	+39	-	-	-	-
ACC.	-	-	-	54%	49%	47%	50%	-	39%	-	-

	300 KG Carcase						\$ Index		
	Carcase Wt. (kg)	Eye Muscle Area (cm <sup>2</sup> )	Rib Fat (mm)	Rump Fat (mm)	Retail Beef Yield (%)	IMF %	Long Fed Export (\$)	Super market (\$)	Heavy Grass Fed (\$)
EBV	-	+ 1.8	-0.3	-0.5	+ 1.4	-0.3	+\$ 24	+\$ 28	+\$ 34
ACC.	-	33%	43%	43%	39%	37%			

Notes: Another very attractive Power Play daughter that has plenty of potential. Remembrance is a very attractive female that catches your eye and she combines balanced figures and carries the tenderness genes. Joined to Melaleuca Chaser C267 (PD: 29 weeks)

Purchaser: \_\_\_\_\_ \$ \_\_\_\_\_

## LOT 39 BUNDALEER OPAL D21 (PB)

Born: 18/04/2008 Age: 21.1months  
 Tattoo: JOS D21  
 Colour: Grey MG% : 1  
 NLIS : WKAM0344XBDD0021  
 NFID: 982 000118810720  
 Pen: 9

MONTEREY SHILOH (PB) BUNDALEER UNCLE SAM U18 (PB)  
 BUNDALEER WORLD CLASS W18 (PB) BUNDALEER X ROAD X37 (PB)  
 BUNDALEER OPAL P4 (PB) BUNDALEER REMEMBRANCE DAY (PB)  
**S: BUNDALEER BACKLINE B31 (PB)** **D: BUNDALEER OPAL A3 (PB)**  
 BUNDALEER PROPHET P2 (PB) BUNDALEER UNCLE SAM U18 (PB)  
 BUNDALEER ROWAN R27 (PB) BUNDALEER OPAL X27 (PB)  
 KOOJAN HILL ROWAN M26 (PB) BUNDALEER OPAL S122 ET (PB)

	Calving				Growth & Maternal					Fertility	
	Calv. Ease Direct	Calv. Ease Dtrs	Gest. Len. (days)	Birth Wt. (kg)	200 Day Wt. (kg)	400 Day Wt. (kg)	600 Day Wt. (kg)	Mat. Cow Wt. (kg)	Milk (kg)	Scrot. Size (cm)	Days to Calv.
	(%)	(%)									
EBV	-9.7	-1.6	-0.9	+6.3	+33	+48	+72	+75	+4	+0.7	-
ACC.	MPV	MPV	MPV	MPV	MPV	MPV	MPV	MPV	MPV	MPV	MPV

	300 KG Carcase						\$ Index		
	Carcase Wt. (kg)	Eye Muscle Area (cm <sup>2</sup> )	Rib Fat (mm)	Rump Fat (mm)	Retail Beef Yield (%)	IMF %	Long Fed Export (\$)	Super market (\$)	Heavy Grass Fed (\$)
EBV	+ 40	+ 1.8	-0.8	-1.1	+ 1.5	-0.2	+\$ 23	+\$ 37	+\$ 38
ACC.	MPV	MPV	MPV	MPV	MPV	MPV			

Notes: Opal is a growthy heifer that will be a large female at maturity. Her MPVs are at the very top of the breed for growth and 'red' carcase traits. Joined to Melaleuca Chaser C267 (PD: 29 weeks)

Purchaser: \_\_\_\_\_ \$ \_\_\_\_\_

**LOT 40**

**BUNDALEER LOLITA D69 (PB)**

Born: 01/07/2008 Age: 18.7months  
 Tattoo: JOS D69  
 Colour: Grey MG% : 100  
 NLIS : WKAM0344XBDD0069  
 NFID: 982 000118810335  
 Pen: 9



WILLALOOKA MAIN BREAK V856 (PB)  
 BUNDALEER CASH FLOW Y6 (PB)  
 BUNDALEER MELISSA W16 (PB)  
**S: BUNDALEER TRUE BLUE A68 (PB)**  
 BUNDALEER PAYDAY P43 (PB)  
 BUNDALEER REMEMBRANCE DAY (PB)  
 BUNDALEER OPAL P4 (PB)

MONTEREY CENTURY TW (PB)  
 MONTEREY SHILOH (PB)  
 MONTEREY MAGNOLIA 3RD (PB)  
**D: BUNDALEER LOLITA U1 (PB)**  
 MONTEREY CARTEL (PB)  
 BUNDALEER LOLITA R147 (PB)  
 BUNDALEER LOLITA P6 (PB)

	Calving				Growth & Maternal					Fertility	
	Calv. Ease Direct	Calv. Ease Dtrs	Gest. Len.	Birth Wt.	200 Day Wt.	400 Day Wt.	600 Day Wt.	Mat. Cow Wt.	Milk (kg)	Scrot. Size (cm)	Days to Calv.
	(%)	(%)	(days)	(kg)	(kg)	(kg)	(kg)	(kg)	(kg)	(cm)	
EBV	-	-	-	+ 6.2	+ 32	+ 43	+ 61	-	+ 3	-	-
ACC.	-	-	-	54%	47%	47%	48%	-	39%	-	-

	300 KG Carcase						\$ Index		
	Carcase Wt.	Eye Muscle Area	Rib Fat	Rump Fat	Retail Beef Yield	IMF %	Long Fed Export	Super market	Heavy Grass Fed
	(kg)	(cm <sup>2</sup> )	(mm)	(mm)	(%)	%	(\$)	(\$)	(\$)
EBV	-	+ 1.5	-0.7	-1.1	+ 1.5	-0.3	+\$ 22	+\$ 32	+\$ 36
ACC.	-	32%	37%	37%	35%	33%			

Notes: A long bodied heifer with a strong topline, evident in her very high EMA scan. She has a lovely light grey coat and fine bone structure. For herds interested in improving carcase yield and EMA Lolita is a prime choice. Dam was paired in the Interbreed Champion Pair of Heifers at the state heifer show in her year. Remains open. Sells with two straws of Monterey Freight Train B275

Purchaser: \_\_\_\_\_ \$ \_\_\_\_\_

**LOT 41**

**BUNDALEER BLACK LOLITA D73 (BF)**

Born: 13/07/2008 Age: 18.3months  
 Tattoo: JOS D73  
 Colour: Black MG% : 1  
 NLIS : WKAM0344XBDD0073  
 NFID: 982 000118810439  
 Pen: 9



WILLALOOKA MAIN BREAK V856 (PB)  
 BUNDALEER CASH FLOW Y6 (PB)  
 BUNDALEER MELISSA W16 (PB)  
**S: BUNDALEER TRUE BLUE A68 (PB)**  
 BUNDALEER PAYDAY P43 (PB)  
 BUNDALEER REMEMBRANCE DAY (PB)  
 BUNDALEER OPAL P4 (PB)

WILLALOOKA RAMSAY (GR)  
 WILLALOOKA MAIN BREAK V856 (PB)  
 WILLALOOKA \$695 (GR)  
**D: BUNDALEER LOLITA Y18 (PB)**  
 MONTEREY CARTEL (PB)  
 BUNDALEER LOLITA R147 (PB)  
 BUNDALEER LOLITA P6 (PB)

	Calving				Growth & Maternal							
	Calv. Ease Direct	Calv. Ease Dtrs	Gest. Len.	Birth Wt.	200 Day Wt.	400 Day Wt.	600 Day Wt.	Mat. Cow Wt.	Milk (kg)	Scrot. Size (cm)	Days to Calv.	
	(%)	(%)	(days)	(kg)	(kg)	(kg)	(kg)	(kg)	(kg)	(cm)		
EBV	-	-	-	+ 6.1	+ 31	+ 45	+ 68	+ 71	+ 4	-	-	
ACC.	MPV	MPV	MPV	MPV	MPV	MPV	MPV	MPV	MPV	MPV	MPV	

	300 KG Carcase						\$ Index		
	Carcase Wt.	Eye Muscle Area	Rib Fat	Rump Fat	Retail Beef Yield	IMF %	Long Fed Export	Super market	Heavy Grass Fed
	(kg)	(cm <sup>2</sup> )	(mm)	(mm)	(%)	%	(\$)	(\$)	(\$)
EBV	-	+ 0.8	-0.4	-0.7	+ 0.6	+ 0.5	+\$ 27	+\$ 36	+\$ 36
ACC.	MPV	MPV	MPV	MPV	MPV	MPV			

Notes: A high growth heifer displaying plenty of potential and will be an impressive female at maturity. Excellent feet and legs, good width in the pins and had one of the higher EMA scans in the group. Out of a high indexing Mainbreak daughter from a very good family line. Remains open. Sells with two straws of Monterey Freight Train B275.

Purchaser: \_\_\_\_\_ \$ \_\_\_\_\_

# 2009-INAUGURAL PRODUCTION SALE

# Feedback

*If you are somehow involved in the beef industry and have a spare 5 minutes on sale day we would appreciate your feedback.*

Which activity/s best describes your involvement in the beef industry?

Commercial, Agent, MG Stud, Other Stud, Consultant, Promotional, Non-Beef or Other

Which lots most closely fit your breeding requirements? .....

Which lots least fit your breeding requirements?.....

Which bull/s most closely meets your breeding requirements? .....

Which bull/s most closely meet ideal growth pattern?.....

Which bull/s most closely meet ideal maturity pattern?.....

Which bull/s most closely meets your ideal capacity?.....

Which bull/s most closely meets your ideal muscle pattern?.....

Which bull/s most closely meets your ideal width?.....

Which bull/s most closely meet your ideal fat cover for sale?.....

Which sire/s most closely fit your breeding requirements? .....

When buying a bull what is the ideal birth weight EBV range for your mature cows? And in kilograms?.....

What weight range (kg) should our bulls be in at 22-23 months?.....

How many seasons do you expect to get out of a bull?.....

How many seasons do you currently get out of your bulls?.....

Are there any other comments that you feel may help in our bull breeding program?

.....

	Not important									Very important
When buying a bull how much emphasis do you place on EBV?	1	2	3	4	5	6	7	8	9	10
How much emphasis do you place on phenotype (how they look)?	1	2	3	4	5	6	7	8	9	10
Considering all bulls have been running in one management group how strongly will comparing 'durgability' influence your buying decision?	1	2	3	4	5	6	7	8	9	10
How strongly does our delivery service influence your buying decision?	1	2	3	4	5	6	7	8	9	10
Does our selling environment meet your needs?	1	2	3	4	5	6	7	8	9	10



**BUYER'S INSTRUCTION SLIP**  
BUNDALEER 2ND ANNUAL PRODUCTION SALE  
21ST JANUARY 2010

PURCHASER'S NAME: .....

TRADING AS: .....

ADDRESS: .....

.....

..... POST CODE: .....

PIC: ..... STUD NAME: .....

PHONE: .....

MOBILE: .....

FAX: .....

EMAIL: .....

LOT PURCHASED: ..... PRICE: .....

LOT PURCHASED: ..... PRICE: .....

LOT PURCHASED: ..... PRICE: .....

LOT PURCHASED: ..... PRICE: .....

LOT PURCHASED: ..... PRICE: .....

LOT PURCHASED: ..... PRICE: .....

TRANSPORT ARRANGEMENTS: .....

.....

.....

.....

DO YOU REQUIRE REGISTRATION TRANSFER: YES/NO

IF YES, HERD PREFIX: .....

SIGNATURE..... 21 JAN 2010

*Our Breeders  
Functional and Efficient*



*Taking out the guess work—pedigrees you can depend on!*