

LOT 26

BUNDALEER KURI E32 (PB)

Born: 18/04/2009 Age: 9.1months
 Tattoo: JOS E32
 Colour: Grey MG% : 100
 NLIS :
 NFID:
 Pen: 6



MONTEREY MAJESTIC LAD (PB)
 MONTEREY MILLENNIUM (PB)
 MONTEREY MAGNOLIA 2ND (PB)
S: ABROLIS GREYS AMBROSE ET (PB)
 MONTEREY TREMENDOUS (PB)
 ABROLIS GREYS MISS TREMENDOUS ET (PB)
 MONTEREY MISS MADONNA (PB)

MONTEREY SHILOH (PB)
 BUNDALEER WORLD CLASS W18 (PB)
 BUNDALEER OPAL P4 (PB)
D: BUNDALEER KURI A44 (PB)
 BUNDALEER ROUND ONE R60 (PB)
 BUNDALEER KURI T17 (PB)
 BUNDALEER KURI R68 (PB)

	Calving				Growth & Maternal					Fertility	
	Calv. Ease Direct	Calv. Ease Dtrs	Gest. Len.	Birth Wt.	200 Day Wt.	400 Day Wt.	600 Day Wt.	Mat. Cow Wt.	Milk (kg)	Scrot. Size (cm)	Days to Calv.
	(%)	(%)	(days)	(kg)	(kg)	(kg)	(kg)	(kg)	(cm)		
EBV	-6.9	-	-	+6.3	+31	+47	+61	+51	+6	+1.4	-
ACC.	MPV	MPV	MPV	MPV	MPV	MPV	MPV	MPV	MPV	MPV	MPV

	300 KG Carcase						\$ Index		
	Carcase Wt.	Eye Muscle Area	Rib Fat	Rump Fat	Retail Beef Yield	IMF %	Long Fed Export (\$)	Super market (\$)	Heavy Grass Fed (\$)
	(kg)	(cm ²)	(mm)	(mm)	(%)	%			
EBV	+35	+1.6	-0.4	-0.5	+1.3	-0.3	+\$28	+\$37	+\$41
ACC.	MPV	MPV	MPV	MPV	MPV	MPV			

Notes: Terrific volume shape and type - a real show stopper and will develop into a sensational female. Out of our Kuri family that done

Purchaser: _____ \$ _____

LOT 27

BUNDALEER LOLITA E30 (PB)

Born: 13/04/2009 Age: 9.2months
 Tattoo: JOS E30
 Colour: Grey MG% : 100
 NLIS :
 NFID:
 Pen: 6



SPRINGWELL JAGUAR L138 (PB)
 SPRINGWELL TRUMP CARD T58 (PB)
 SPRINGWELL DAYA N95 (PB)
S: BUNDALEER POWER PLAY A2 (PB)
 BUNDALEER MAX M33 (PB)
 BUNDALEER DAVINA Q48 (PB)
 BUNDALEER DAVINA 201 (PB)

WILLALOOKA RAMSAY (GR)
 WILLALOOKA MAIN BREAK V856 (PB)
 WILLALOOKA S695 (GR)
D: BUNDALEER LOLITA A16 (PB)
 BUNDALEER PAYDAY P43 (PB)
 BUNDALEER LOLITA S125 ET (PB)
 BUNDALEER LOLITA P6 (PB)

	Calving				Growth & Maternal					Fertility	
	Calv. Ease Direct	Calv. Ease Dtrs	Gest. Len.	Birth Wt.	200 Day Wt.	400 Day Wt.	600 Day Wt.	Mat. Cow Wt.	Milk (kg)	Scrot. Size (cm)	Days to Calv.
	(%)	(%)	(days)	(kg)	(kg)	(kg)	(kg)	(kg)	(kg)	(cm)	
EBV	-5	+0.1	-	+4.6	+24	+35	+52	+56	-2	+0.8	-
ACC.	MPV	MPV	MPV	MPV	MPV	MPV	MPV	MPV	MPV	MPV	MPV

	300 KG Carcase						\$ Index		
	Carcase Wt.	Eye Muscle Area	Rib Fat	Rump Fat	Retail Beef Yield	IMF %	Long Fed Export (\$)	Super market (\$)	Heavy Grass Fed (\$)
	(kg)	(cm ²)	(mm)	(mm)	(%)	%			
EBV	+27	+0.7	-0.6	-0.8	+0.7	+0.1	+\$23	+\$30	+\$32
ACC.	MPV	MPV	MPV	MPV	MPV	MPV			

Notes: An attractive young heifer that has plenty of eye appeal. Out of one of our most complete Mainbreak daughters by Powerply - this mix did exceptionally well at the 2008 PRS.

Purchaser: _____ \$ _____

LOT 28

BUNDALEER OPAL E14 (PB)

Born: 22/03/2009 Age: 10months
 Tattoo: JOS E14
 Colour: Grey MG% : 100
 NLIS :
 NFID:
 Pen: 6



Picture: Dam Bundaleer Opal X27

MONTEREY STAR CHIEF (PB)
 MONTEREY STARLIGHT (PB)
 MONTEREY BOUQUET N24 (PB)
S: MONTEREY GOTCHA (PB)
 BUNDALEER MAX M33 (PB)
 BUNDALEER OPAL Q66 (PB)
 BUNDALEER OPAL 54 (PB)

MONTEREY SHILOH (PB)
 BUNDALEER UNCLE SAM U18 (PB)
 BUNDALEER LOLITA P6 (PB)
D: BUNDALEER OPAL X27 (PB)
 MONTEREY STAR CHIEF (PB)
 BUNDALEER OPAL S122 ET (PB)
 BUNDALEER OPAL P4 (PB)

	Calving				Growth & Maternal					Fertility	
	Calv. Ease Direct	Calv. Ease Dtrs (%)	Gest. Len. (days)	Birth Wt. (kg)	200 Day Wt. (kg)	400 Day Wt. (kg)	600 Day Wt. (kg)	Mat. Cow Wt. (kg)	Milk (kg)	Scrot. Size (cm)	Days to Calv.
	(%)	(%)	(days)	(kg)	(kg)	(kg)	(kg)	(kg)	(kg)	(cm)	
EBV	-6.2	-2.7	-2	+5.4	+27	+42	+67	+73	+2	+0.5	-0.2
ACC.	MPV	MPV	MPV	MPV	MPV	MPV	MPV	MPV	MPV	MPV	MPV

	300 KG Carcase					\$ Index			
	Carcase Wt. (kg)	Eye Muscle Area (cm ²)	Rib Fat (mm)	Rump Fat (mm)	Retail Beef Yield (%)	IMF %	Long Fed Export (\$)	Super market (\$)	Heavy Grass Fed (\$)
	(kg)	(cm ²)	(mm)	(mm)	(%)	%	(\$)	(\$)	(\$)
EBV	+35	+1.9	-0.4	-0.6	+1.2	0.0	+\$28	+\$39	+\$40
ACC.	MPV	MPV	MPV	MPV	MPV	MPV			

Notes: Plenty of potential here. Good structure, plenty of length and very good MPVs. Her pedigree blends some of the state's most successful genetics and we expect E14 to grow into a top female. Sells with two straws of Melaleuca Chaser C267.

Purchaser: _____ \$ _____

LOT 29

BUNDALEER OPAL E66 (PB)

Born: 02/08/2009 Age: 5.6months
 Tattoo: JOS E66
 Colour: Silver MG% : 100
 NLIS :
 NFID:
 Pen: 6



Picture: Bundaleer Birthright B69

WILLALOOKA PHARAOH P47 (PB)
 MONTEREY STRATOSPHERE ET (PB)
 MONTEREY MISS MAGNOLIA S90 (PB)
S: BUNDALEER BIRTHRIGHT B69 (PB)
 ORCADIA PARK SYNDICATE (PB)
 SPRINGWELL ANN N34 (PB)
 SPRINGWELL ANN 1196 (PB)

MONTEREY SHILOH (PB)
 BUNDALEER WORLD CLASS W18 (PB)
 BUNDALEER OPAL P4 (PB)
D: BUNDALEER LOLITA B63 (PB)
 BUNDALEER UNCLE SAM U18 (PB)
 BUNDALEER LOLITA W25 (PB)
 BUNDALEER LOLITA S14 (PB)

	Calving				Growth & Maternal					Fertility	
	Calv. Ease Direct	Calv. Ease Dtrs (%)	Gest. Len. (days)	Birth Wt. (kg)	200 Day Wt. (kg)	400 Day Wt. (kg)	600 Day Wt. (kg)	Mat. Cow Wt. (kg)	Milk (kg)	Scrot. Size (cm)	Days to Calv.
	(%)	(%)	(days)	(kg)	(kg)	(kg)	(kg)	(kg)	(kg)	(cm)	
EBV	-	-	-	+5.8	+33	+47	+65	+68	+6	+1.0	-
ACC.	MPV	MPV	MPV	MPV	MPV	MPV	MPV	MPV	MPV	MPV	MPV

	300 KG Carcase					\$ Index			
	Carcase Wt. (kg)	Eye Muscle Area (cm ²)	Rib Fat (mm)	Rump Fat (mm)	Retail Beef Yield (%)	IMF %	Long Fed Export (\$)	Super market (\$)	Heavy Grass Fed (\$)
	(kg)	(cm ²)	(mm)	(mm)	(%)	%	(\$)	(\$)	(\$)
EBV	-	+1.3	-1.1	-1.5	+1.7	-0.5	+\$14	+\$30	+\$31
ACC.	MPV	MPV	MPV	MPV	MPV	MPV			

Notes: Only a youngster displaying excellent potential. Blends structure, phenotype and figures into a complete package. Sells with two straws of Melaleuca Chaser C267.

Purchaser: _____ \$ _____

LOT 30

BUNDALEER KURI A62 (PB)

Born: 12/06/2005 Age: 4.6 years
 Tattoo: JOS A62
 Colour: Silver MG% : 100
 NLIS : WJAM0019XBA00062
 NFID: 982 000000178580
 Pen: 7



Calv. JOS E28
 DOB: 10/4/09
 Sire:
 B. Power Play A2

WILLALOOKA RAMSAY (GR)
 WILLALOOKA MAIN BREAK V856 (PB)
 WILLALOOKA S695 (GR)
S: BUNDALEER CASH FLOW Y6 (PB)
 MONTEREY SHILOH (PB)
 BUNDALEER MELISSA W16 (PB)
 KOOJAN HILL MELISSA N26 (PB)

BUNDALEER MAX M33 (PB)
 BUNDALEER PAYDAY P43 (PB)
 BUNDALEER DIANNA M04 (PB)
D: BUNDALEER KURI X14 (PB)
 BUNDALEER ROUND ONE R60 (PB)
 BUNDALEER KURI T17 (PB)
 BUNDALEER KURI R68 (PB)

	Calving				Growth & Maternal					Fertility	
	Calv. Ease Direct	Calv. Ease Dtrs (%)	Gest. Len. (days)	Birth Wt. (kg)	200 Day Wt. (kg)	400 Day Wt. (kg)	600 Day Wt. (kg)	Mat. Cow Wt. (kg)	Milk (kg)	Scrot. Size (cm)	Days to Calv.
	EBV	-8.1	-	-	+ 5.3	+ 28	+ 40	+ 54	+ 44	+ 5	-
ACC.	36%	-	-	72%	67%	63%	67%	58%	37%	-	-

	300 KG Carcase						\$ Index		
	Carcase Wt. (kg)	Eye Muscle Area (cm ²)	Rib Fat (mm)	Rump Fat (mm)	Retail Beef Yield (%)	IMF %	Long Fed Export (\$)	Super market (\$)	Heavy Grass Fed (\$)
	EBV	+ 30	+ 1.5	-1.1	-1.6	+ 1.7	-0.4	+\$ 18	+\$ 28
ACC.	55%	42%	59%	59%	52%	48%			

Notes: A large volume, easy doing female that is typical of Cash Flow daughters, that is, structurally sound, wedge shaped, easy doing and milky. Performance figures in the top 10 percent for 200, 400 Dxy Growth and RBY, along with high milk, Carcase Wt. and EMA. Really bends the Mature Cow Weight without sacrificing growth rate. A stud female that is stepping into the prime of her reproductive life and she is joined to our new sire, Monterey Freight Train B275 (PD: 24 weeks). A very attractive 3 in 1 unit.

Purchaser: _____ \$ _____

LOT 31

BUNDALEER OPAL Z13 (PB)

Born: 27/04/2004 Age: 5.7 years
 Tattoo: JOS Z13
 Colour: Silver MG% : 100
 NLIS :
 NFID:
 Pen: 7

V D A R NEW TREND 315 (GR) (B)
 WILLALOOKA RAMSAY (GR)
 WILLALOOKA AGNES K207 (PB)
S: WILLALOOKA MAIN BREAK V856 (PB)
 WILLALOOKA P19 (GR)
 WILLALOOKA S695 (GR)
 WILLALOOKA AM Q678 (PB)

ORCADIA PARK REMBRANDT (PB)
 ORCADIA PARK DESTINY L41 ET (PB)
 ORCADIA PARK MINETTE 1002 (PB)
D: BUNDALEER EMERALD Q14 (PB)
 KOOJAN HILL DEMPSEY (PB)
 BUNDALEER OPAL 64 (PB)
 BUNDALEER OPAL 139 (PB)

	Calving				Growth & Maternal					Fertility	
	Calv. Ease Direct	Calv. Ease Dtrs (%)	Gest. Len. (days)	Birth Wt. (kg)	200 Day Wt. (kg)	400 Day Wt. (kg)	600 Day Wt. (kg)	Mat. Cow Wt. (kg)	Milk (kg)	Scrot. Size (cm)	Days to Calv.
	EBV	-9.5	-	-0.1	+ 7.0	+ 33	+ 48	+ 67	+ 65	+ 5	+ 0.1
ACC.	42%	-	51%	76%	70%	68%	72%	61%	52%	51%	-

	300 KG Carcase						\$ Index		
	Carcase Wt. (kg)	Eye Muscle Area (cm ²)	Rib Fat (mm)	Rump Fat (mm)	Retail Beef Yield (%)	IMF %	Long Fed Export (\$)	Super market (\$)	Heavy Grass Fed (\$)
	EBV	+ 38	+ 2.1	+ 0.3	+ 0.3	+ 0.9	+ 0.6	+\$ 36	+\$ 41
ACC.	60%	47%	65%	65%	58%	52%			

Notes: (Replacement lot for JOS A36) Another very feminine, long bodied Mainbreak daughter with impressive capacity (approx. 850kg) and exceptional figures. That is, top 1-5% for 200, 400, 600 day growth, Carcase Wt, EMA and IMF. She has positive back fat and high Milk and Index Values – these figures don't come along every day. Her dam is a maternal sister to Southend Westrowan's dam, one of Southend's most influential sires. A female that puts it all together and will be one of the top females auctioned in the breed for 2010. Joined to Bundaleer BB King B4 (PD: 32 weeks) Sells with two straws of Monterey Freight Train B275.

Purchaser: _____ \$ _____

LOT 32

BUNDALEER LOLITA W12 (PB)

Born: 25/05/2001 Age: 8.6 years
 Tattoo: JOS W12
 Colour: Silver MG% : 100
 NLIS : WKAM0344XBAW0012
 NFID: 982 000047215016
 Pen: 7



Daughter: JOS A50

Son: JOS C15

ORCADIA PARK CENTURY (PB)
 MONTEREY CENTURY TW (PB)
 MONTEREY SHOWGIRL 9TH (PB)
S: MONTEREY SHILOH (PB)
 MONTEREY LUSTY (PB)
 MONTEREY MAGNOLIA 3RD (PB)
 MONTEREY MAGNOLIA 2ND (PB)

THE GLEN SANDBOY (PB)
 MONTEREY MAJESTIC (PB)
 WANDENELLA (PB)
D: BUNDALEER LOLITA T4 ET (PB)
 BUNDALEER KING 71 (PB)
 BUNDALEER LOLITA P6 (PB)
 BUNDALEER LOLITA 196 (PB)

EBV ACC.	Calving				Growth & Maternal					Fertility	
	Calv. Ease Direct (%)	Calv. Ease Dtrs (%)	Gest. Len. (days)	Birth Wt. (kg)	200 Day Wt. (kg)	400 Day Wt. (kg)	600 Day Wt. (kg)	Mat. Cow Wt. (kg)	Milk (kg)	Scrot. Size (cm)	Days to Calv.
	-3.5	-1.1	-0.6	+2.8	+22	+25	+40	+51	+3	+0.9	-2.8
54%	47%	59%	81%	75%	74%	77%	74%	65%	60%	39%	

EBV ACC.	300 KG Carcase						\$ Index		
	Carcase Wt. (kg)	Eye Muscle Area (cm ²)	Rib Fat (mm)	Rump Fat (mm)	Retail Beef Yield (%)	IMF %	Long Fed Export (\$)	Super market (\$)	Heavy Grass Fed (\$)
	+27	+2.2	-0.3	-0.5	+1.5	-0.2	+\$23	+\$28	+\$36
66%	53%	68%	68%	62%	58%				

Notes: A cracking Murray Grey female and is the first Shiloh daughter we have offered for sale. She has exceptional length, fleshing and overall constitution. Moderate Birth Wt. and high EMA and Days to Calving. Shiloh remains one of the most influential paddock sires we have used and his daughters have bred exceptionally well. Joined to Bundaleer True Blue A68 (PD: 30 weeks)

Purchaser: _____ \$ _____

LOT 33

MARTINDALE TOPSY T42 (PB)

Born: 28/04/1998 Age: 11.7 years
 Tattoo: MZ T42
 Colour: Silver MG% : 100
 NLIS : WKAM0344XEAT0042
 NFID: 982 000045845632
 Pen: 7



LOCHABER-BRAES DIPLOMAT (PB)
 BUNDALEER MAX M33 (PB)
 THE FAVOURITE FREDERIKA IMP NZ (GR)
S: BUNDALEER PAYDAY P43 (PB)
 BUNDALEER JONES 217 (PB)
 BUNDALEER DIANNA M04 (PB)
 BUNDALEER LOLITA 192 (PB)

TORRENS VALE BASIL (PB)
 MARJON CAVALIER (PB)
 MARJON ANNABEL (PB)
D: MARTINDALE MOPPY (PB)
 KOOJAN HILL SILVER CREST (PB)
 SPRINGWELL FIFI 951 (PB)
 ILLAWONG PARISIENNE (PB)

EBV ACC.	Calving				Growth & Maternal					Fertility	
	Calv. Ease Direct (%)	Calv. Ease Dtrs (%)	Gest. Len. (days)	Birth Wt. (kg)	200 Day Wt. (kg)	400 Day Wt. (kg)	600 Day Wt. (kg)	Mat. Cow Wt. (kg)	Milk (kg)	Scrot. Size (cm)	Days to Calv.
	-10.5	-4.5	-0.4	+6.1	+25	+34	+44	+32	-3	0.0	+1.5
55%	48%	56%	81%	75%	72%	73%	62%	61%	62%	37%	

EBV ACC.	300 KG Carcase						\$ Index		
	Carcase Wt. (kg)	Eye Muscle Area (cm ²)	Rib Fat (mm)	Rump Fat (mm)	Retail Beef Yield (%)	IMF %	Long Fed Export (\$)	Super market (\$)	Heavy Grass Fed (\$)
	+21	+1.1	-0.3	-0.6	+0.9	0.0	\$0	+\$11	+\$6
63%	50%	63%	63%	57%	45%				

Notes: Superb structure, constitution, performance and has been a past trailleader for growth. We have had an extraordinary run from our Payday daughters and Topsy is a wonderful testament to the bull and the breed. Also worth noting is Koojan Hill Silver Crest on the maternal side. We have retained her only two daughters that are shaping up into fast growing moderate framed (FS 6) females. All her sons have sold well and we have retained a grandson in the stud. We anticipate the calf in utero will be outstanding. Paddock joined (PD: 14 weeks) to B. BB King B4. One of three **TOP TEN FEMALES** we are selling this year.

Purchaser: _____ \$ _____

LOT 34

BUNDALEER MELISSA R137 (PB)

Born: 07/11/1996 Age: 13.2 years
 Tattoo: JOS R137
 Colour: Silver MG% : 100 Pen: 8
 NLIS : WKAM0344XBAR0137
 NFID: 982 000047215066



Son: JOS B9

Son: JOS C8

Farmweekly

LOCHABER-BRAES DIPLOMAT (PB)
 BUNDAL EER MAX M33 (PB)
 THE FAVOURITE FREDERKA IMP NZ(GR)
S: BUNDAL EER PAYDAY P43 (PB)
 BUNDAL EER JONES 217 (PB)
 BUNDAL EER DIANNA M04 (PB)
 BUNDAL EER LOLITA 192 (PB)

ORCADIA PARK DIPLOMAT (PB)
 LOCHABER-BRAES DIPLOMAT (PB)
 ORCADIA PARK VELMA 4TH (PB)
D: KOOJAN HILL MELISSA N26 (PB)
 ORCADIA PARK REMBRANDT (PB)
 KOOJAN HILL MELISSA 734 (PB)
 KOOJAN HILL MELISSA 14TH (PB)

LOT 35

BUNDAL EER LOLITA R147 (PB)

Born: 06/12/1996 Age: 13.1 years
 Tattoo: JOS R147
 Colour: Grey MG% : 100
 NLIS : WKAM0344XBAR0147
 NFID: 982 000047214790
 Pen: 8

ORCADIA PARK CENTURY (PB)
 ORCADIA PARK SYNDICATE (PB)
 ORCADIA PARK SAPPHIRE 2ND (PB)
S: MONTEREY CARTEL (PB)
 THE CROFT KERNEWEK (PB)
 MONTEREY MANNEQUIN (PB)
 MONTEREY SHOWGIRL 4TH (PB)

BUNDAL EER LARWOOD 199 (PB)
 BUNDAL EER KING 71 (PB)
 BUNDAL EER DAVINA 166 (PB)
D: BUNDAL EER LOLITA P6 (PB)
 ORCADIA PARK REMBRANDT (PB)
 BUNDAL EER LOLITA 196 (PB)
 SOVEREIGN LOLITA 2ND (PB)

EBV ACC.	Calving				Growth & Maternal				Fertility	
	Calv. Ease Direct (%)	Calv. Ease Dtrs (%)	Gest. Len. (days)	Birth Wt. (kg)	200 Day Wt. (kg)	400 Day Wt. (kg)	600 Day Wt. (kg)	Milk Cow Wt. (kg)	Scrot. Size (cm)	Days to Calv.
	-5.9	-2.9	-1.7	+2.7	+16	+22	+24	+8	+1	+0.7
57%	51%	62%	80%	74%	74%	76%	76%	69%	66%	42%

EBV ACC.	300 KG Carcase						\$ Index		
	Carcase Wt. (kg)	Eye Muscle Area (cm ²)	Rib Fat (mm)	Rump Fat (mm)	Retail Beef Yield (%)	IMF %	Long Fed Export (\$)	Super market (\$)	Heavy Grass Fed (\$)
	+14	+1.4	-0.8	-1.1	+1.6	-0.7	+\$2	+\$8	+\$8
65%	51%	59%	59%	55%	50%				

Notes: A powerhouse female that has been one of our bread-and-butter breeders over the past decade. A proven matriarch that continues to impress. Progeny sales exceed \$30,000 with sons selling to \$7500 and a daughter topped our Inaugural Production Sale. Her grey bull calf, Bundaleer Emboss E51 (PB) (DOB 19.5.09) is a well balanced calf with a bit of extra length (Sire: Abrolis Greys Ambrose (PB) ET) will be a very saleable bull in 12 months time. Joined to Cash Flow (PD: 9 weeks) A **TOP TEN FEMALE**

Purchaser: _____ \$ _____

EBV ACC.	Calving				Growth & Maternal				Fertility		
	Calv. Ease Direct (%)	Calv. Ease Dtrs (%)	Gest. Len. (days)	Birth Wt. (kg)	200 Day Wt. (kg)	400 Day Wt. (kg)	600 Day Wt. (kg)	Mat. Cow Wt. (kg)	Milk (kg)	Scrot. Size (cm)	Days to Calv.
	-3.8	-0.3	+0.8	+4.3	+23	+34	+59	+84	+5	+0.4	-5.1
58%	54%	60%	82%	78%	78%	80%	79%	79%	63%	45%	

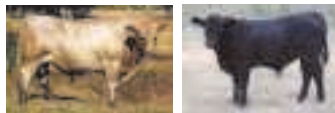
EBV ACC.	300 KG Carcase						\$ Index		
	Carcase Wt. (kg)	Eye Muscle Area (cm ²)	Rib Fat (mm)	Rump Fat (mm)	Retail Beef Yield (%)	IMF %	Long Fed Export (\$)	Super market (\$)	Heavy Grass Fed (\$)
	+34	+0.9	-0.4	-0.6	+0.6	+0.3	+\$33	+\$39	+\$49
70%	53%	66%	66%	61%	56%				

Notes: They don't get any more consistent than R147, she has strung together a standout line of progeny with seven daughters breeding in stud herds in WA. Overall, Lolita is a large volume, large framed female with some excellent performance figures that remain at the top end of the breed. We rate R147 very highly and consider that her last few calves will lift the genetic profile of any herd. Has a tidy Cash Flow bull calf at foot, Bundaleer Edwurdian E45 (PB) (DOB 1.5.09) and joined to Monterey Freight Train B275 (PD: 18 weeks). A **TOP TEN FEMALE**

Purchaser: _____ \$ _____

LOT 36 BUNDALEER ESERALDA R19 (PB)

Born: 16/03/1996 Age: 13.8 years
 Tattoo: JOS R19
 Colour: Grey MG% : 100
 NLIS : WKAM0344XBAR0019
 NFID: 982 000046778884



Son: JOS C14 Calf at foot: JOS E42

ORCADIA PARK DIPLOMAT (PB)
 LOCHABER-BRAES DIPLOMAT (PB)
 ORCADIA PARK VELMA 4TH (PB)
S: MONTEREY STAR CHIEF (PB)
 ORCADIA PARK REMBRANDT (PB)
 MONTEREY MARTINI (PB)
 MONTEREY SHOWGIRL 6TH (PB)

WOODBOURN PEACE MAKER (PB)
 WOODBOURN WALLY (PB)
 PARKNOOK KAREN (PB)
D: KOOJAN HILL ESERALDA K48 (PB)
 BRIELLEN NAVAJO (PB)
 KOOJAN HILL ESERALDA (PB)
 THE GLEN ESERALDA 59TH (PB)

	Calving				Growth & Maternal					Fertility	
	Calv. Ease Direct	Calv. Ease Dtrs	Gest. Len.	Birth Wt.	200 Day Wt.	400 Day Wt.	600 Day Wt.	Mat. Cow Wt.	Milk (kg)	Scrot. Size (cm)	Days to Calv.
	(%)	(%)	(days)	(kg)	(kg)	(kg)	(kg)	(kg)	(kg)	(cm)	
EBV	-0.5	-6.3	-1.4	+2.0	+6	+8	+11	-13	+9	+0.6	-1.0
ACC.	60%	58%	68%	84%	78%	77%	77%	75%	73%	65%	47%

	300 KG Carcase						\$ Index		
	Carcase Wt.	Eye Muscle Area	Rib Fat	Rump Fat	Retail Beef Yield	IMF %	Long Fed Export	Super market	Heavy Grass Fed
	(kg)	(cm ²)	(mm)	(mm)	(%)	%	(\$)	(\$)	(\$)
EBV	-4	+ 0.2	+ 1.1	+ 1.7	-0.7	+ 0.2	+\$ 11	+\$ 9	+\$ 10
ACC.	66%	52%	59%	59%	56%	52%			

Notes: A Koojan Hill bloodline female we rate highly and again has bred exceptionally well. Her daughters possess excellent type and presence and we have over a dozen of her descendants breeding in the herd. A strapping True Blue bull calf at foot, Bundaleer Essential E42 (BF) (DOB 26.4.09) and a top joining, Monterey Freight Train B275 (PD: 16 weeks) make R19 an exceptional 3 in 1 outfit.

Purchaser: _____ \$ _____

LOT 37 BUNDALEER ESERALDA D10 (PB)

Born: 12/04/2008 Age: 21.3 months
 Tattoo: JOS D10
 Colour: Silver MG% : 100
 NLIS : WKAM0344XBDD0010
 NFID: 982 000118810525
 Pen: 9

SPRINGWELL JAGUAR L138 (PB)
 SPRINGWELL TRUMP CARD T58 (PB)
 SPRINGWELL DAVIA N95 (PB)
S: BUNDALEER POWER PLAY A2 (PB)
 BUNDALEER MAX M33 (PB)
 BUNDALEER DAVINA Q48 (PB)
 BUNDALEER DAVINA 201 (PB)

WILLALOOKA RAMSAY (GR)
 WILLALOOKA MAIN BREAK V856 (PB)
 WILLALOOKA S695 (GR)
D: BUNDALEER ESERALDA Y1 (PB)
 BUNDALEER PROPHET P2 (PB)
 BUNDALEER ESERALDA W11 (PB)
 BUNDALEER ESERALDA U14 (PB)

	Calving				Growth & Maternal					Fertility	
	Calv. Ease Direct	Calv. Ease Dtrs	Gest. Len.	Birth Wt.	200 Day Wt.	400 Day Wt.	600 Day Wt.	Mat. Cow Wt.	Milk (kg)	Scrot. Size (cm)	Days to Calv.
	(%)	(%)	(days)	(kg)	(kg)	(kg)	(kg)	(kg)	(kg)	(cm)	
EBV	-	-	-	+1.2	+16	+26	+41	-	-2	-	-
ACC.	-	-	-	54%	50%	48%	52%	-	40%	-	-

	300 KG Carcase						\$ Index		
	Carcase Wt.	Eye Muscle Area	Rib Fat	Rump Fat	Retail Beef Yield	IMF %	Long Fed Export	Super market	Heavy Grass Fed
	(kg)	(cm ²)	(mm)	(mm)	(%)	%	(\$)	(\$)	(\$)
EBV	-	+ 0.9	+ 0.4	+ 0.5	+ 0.1	+ 0.6	+\$ 41	+\$ 36	+\$ 45
ACC.	-	35%	45%	45%	42%	38%			

Notes: A young, attractive heifer that bends the growth curve, has positive fat and excellent index values. Calf in utero will have exceptional figures and will offer a cross section of WA genetics. Joined to Melaleuca Chaser C267 (PD: 24 weeks)

Purchaser: _____ \$ _____

LOT 38 BUNDALEER REMEMBRANCE D47 (PB)

Born: 14/05/2008 Age: 20.2months
 Tattoo: JOS D47
 Colour: Silver MG% : 1
 NLIS : WKAM0344XBDD0047
 NFID: 982 000118810595
 Pen: 9

SPRINGWELL JAGUAR L138 (PB)
 SPRINGWELL TRUMP CARD T58 (PB)
 SPRINGWELL DAIYA N95 (PB)
 S: **BUNDALEER POWER PLAY A2 (PB)**
 BUNDALEER MAX M33 (PB)
 BUNDALEER DAVINA Q48 (PB)
 BUNDALEER DAVINA 201 (PB)

WILLALOOKA PHARAOH P47 (PB)
 BUNDALEER WALK ABOUT W3 TW (PB)
 BUNDALEER MPOST P1 (PB)
 D: **BUNDALEER REMEMBRANCE Y39 (PB)**
 MONTEREY SHILOH (PB)
 BUNDALEER REMEMBRANCE V21 (PB)
 BUNDALEER REMEMBRANCE DAY (PB)

	Calving				Growth & Maternal					Fertility	
	Calv. Ease Direct	Calv. Ease Dtrs	Gest. Len. (days)	Birth Wt. (kg)	200 Day Wt. (kg)	400 Day Wt. (kg)	600 Day Wt. (kg)	Mat. Cow Wt. (kg)	Milk (kg)	Scrot. Size (cm)	Days to Calv.
	(%)	(%)									
EBV	-	-	-	+3.0	+23	+29	+39	-	-	-	-
ACC.	-	-	-	54%	49%	47%	50%	-	39%	-	-

	300 KG Carcass						\$ Index		
	Carcass Wt. (kg)	Eye Muscle Area (cm ²)	Rib Fat (mm)	Rump Fat (mm)	Retail Beef Yield (%)	IMF %	Long Fed Export (\$)	Super market (\$)	Heavy Grass Fed (\$)
EBV	-	+ 1.8	-0.3	-0.5	+ 1.4	-0.3	+\$ 24	+\$ 28	+\$ 34
ACC.	-	33%	43%	43%	39%	37%			

Notes: Another very attractive Power Play daughter that has plenty of potential. Remembrance is a very attractive female that catches your eye and she combines balanced figures and carries the tenderness genes. Joined to Melaleuca Chaser C267 (PD: 29 weeks)

Purchaser: _____ \$ _____

LOT 39 BUNDALEER OPAL D21 (PB)

Born: 18/04/2008 Age: 21.1months
 Tattoo: JOS D21
 Colour: Grey MG% : 1
 NLIS : WKAM0344XBDD0021
 NFID: 982 000118810720
 Pen: 9

MONTEREY SHILOH (PB)
 BUNDALEER WORLD CLASS W18 (PB)
 BUNDALEER OPAL P4 (PB)
 S: **BUNDALEER BACKLINE B31 (PB)**
 BUNDALEER PROPHET P2 (PB)
 BUNDALEER ROWAN R27 (PB)
 KOOJAN HILL ROWAN M26 (PB)

BUNDALEER UNCLE SAM U18 (PB)
 BUNDALEER X ROAD X37 (PB)
 BUNDALEER REMEMBRANCE DAY (PB)
 D: **BUNDALEER OPAL A3 (PB)**
 BUNDALEER UNCLE SAM U18 (PB)
 BUNDALEER OPAL X27 (PB)
 BUNDALEER OPAL S122 ET (PB)

	Calving				Growth & Maternal					Fertility	
	Calv. Ease Direct	Calv. Ease Dtrs	Gest. Len. (days)	Birth Wt. (kg)	200 Day Wt. (kg)	400 Day Wt. (kg)	600 Day Wt. (kg)	Mat. Cow Wt. (kg)	Milk (kg)	Scrot. Size (cm)	Days to Calv.
	(%)	(%)									
EBV	-9.7	-1.6	-0.9	+6.3	+33	+48	+72	+75	+4	+0.7	-
ACC.	MPV	MPV	MPV	MPV	MPV	MPV	MPV	MPV	MPV	MPV	MPV

	300 KG Carcass						\$ Index		
	Carcass Wt. (kg)	Eye Muscle Area (cm ²)	Rib Fat (mm)	Rump Fat (mm)	Retail Beef Yield (%)	IMF %	Long Fed Export (\$)	Super market (\$)	Heavy Grass Fed (\$)
EBV	+ 40	+ 1.8	-0.8	-1.1	+ 1.5	-0.2	+\$ 23	+\$ 37	+\$ 38
ACC.	MPV	MPV	MPV	MPV	MPV	MPV			

Notes: Opal is a growthy heifer that will be a large female at maturity. Her MPVs are at the very top of the breed for growth and 'red' carcass traits. Joined to Melaleuca Chaser C267 (PD: 29 weeks)

Purchaser: _____ \$ _____

LOT 40

BUNDALEER LOLITA D69 (PB)

Born: 01/07/2008 Age: 18.7months
 Tattoo: JOS D69
 Colour: Grey MG% : 100
 NLIS : WKAM0344XBDD0069
 NFID: 982 000118810335
 Pen: 9



WILLALOOKA MAIN BREAK V856 (PB)
 BUNDALEER CASH FLOW Y6 (PB)
 BUNDALEER MELISSA W16 (PB)
S: BUNDALEER TRUE BLUE A68 (PB)
 BUNDALEER PAYDAY P43 (PB)
 BUNDALEER REMEMBRANCE DAY (PB)
 BUNDALEER OPAL P4 (PB)

MONTEREY CENTURY TW (PB)
 MONTEREY SHILOH (PB)
 MONTEREY MAGNOLIA 3RD (PB)
D: BUNDALEER LOLITA U1 (PB)
 MONTEREY CARTEL (PB)
 BUNDALEER LOLITA R147 (PB)
 BUNDALEER LOLITA P6 (PB)

	Calving				Growth & Maternal					Fertility	
	Calv. Ease Direct	Calv. Ease Dtrs	Gest. Len.	Birth Wt.	200 Day Wt.	400 Day Wt.	600 Day Wt.	Mat. Cow Wt.	Milk (kg)	Scrot. Size (cm)	Days to Calv.
	(%)	(%)	(days)	(kg)	(kg)	(kg)	(kg)	(kg)	(cm)		
EBV	-	-	-	+ 6.2	+ 32	+ 43	+ 61	-	+ 3	-	-
ACC.	-	-	-	54%	47%	47%	48%	-	39%	-	-

	300 KG Carcase					\$ Index			
	Carcase Wt.	Eye Muscle Area	Rib Fat	Rump Fat	Retail Beef Yield	IMF %	Long Fed Export	Super market	Heavy Grass Fed
	(kg)	(cm ²)	(mm)	(mm)	(%)	%	(\$)	(\$)	(\$)
EBV	-	+ 1.5	-0.7	-1.1	+ 1.5	-0.3	+\$ 22	+\$ 32	+\$ 36
ACC.	-	32%	37%	37%	35%	33%			

Notes: A long bodied heifer with a strong topline, evident in her very high EMA scan. She has a lovely light grey coat and fine bone structure. For herds interested in improving carcase yield and EMA Lolita is a prime choice. Dam was paired in the Interbred Champion Pair of Heifers at the state heifer show in her year. Remains open. Sells with two straws of Monterey Freight Train B275

Purchaser: _____ \$ _____

LOT 41

BUNDALEER BLACK LOLITA D73 (BF)

Born: 13/07/2008 Age: 18.3months
 Tattoo: JOS D73
 Colour: Black MG% : 1
 NLIS : WKAM0344XBDD0073
 NFID: 982 000118810439
 Pen: 9



WILLALOOKA MAIN BREAK V856 (PB)
 BUNDALEER CASH FLOW Y6 (PB)
 BUNDALEER MELISSA W16 (PB)
S: BUNDALEER TRUE BLUE A68 (PB)
 BUNDALEER PAYDAY P43 (PB)
 BUNDALEER REMEMBRANCE DAY (PB)
 BUNDALEER OPAL P4 (PB)

WILLALOOKA RAMSAY (GR)
 WILLALOOKA MAIN BREAK V856 (PB)
 WILLALOOKA \$695 (GR)
D: BUNDALEER LOLITA Y18 (PB)
 MONTEREY CARTEL (PB)
 BUNDALEER LOLITA R147 (PB)
 BUNDALEER LOLITA P6 (PB)

	Calving				Growth & Maternal					Fertility	
	Calv. Ease Direct	Calv. Ease Dtrs	Gest. Len.	Birth Wt.	200 Day Wt.	400 Day Wt.	600 Day Wt.	Mat. Cow Wt.	Milk (kg)	Scrot. Size (cm)	Days to Calv.
	(%)	(%)	(days)	(kg)	(kg)	(kg)	(kg)	(kg)	(kg)	(cm)	
EBV	-	-	-	+ 6.1	+ 31	+ 45	+ 68	+ 71	+ 4	-	-
ACC.	MPV	MPV	MPV	MPV	MPV	MPV	MPV	MPV	MPV	MPV	MPV

	300 KG Carcase					\$ Index			
	Carcase Wt.	Eye Muscle Area	Rib Fat	Rump Fat	Retail Beef Yield	IMF %	Long Fed Export	Super market	Heavy Grass Fed
	(kg)	(cm ²)	(mm)	(mm)	(%)	%	(\$)	(\$)	(\$)
EBV	-	+ 0.8	-0.4	-0.7	+ 0.6	+ 0.5	+\$ 27	+\$ 36	+\$ 36
ACC.	MPV	MPV	MPV	MPV	MPV	MPV			

Notes: A high growth heifer displaying plenty of potential and will be an impressive female at maturity. Excellent feet and legs, good width in the pins and had one of the higher EMA scans in the group. Out of a high indexing Mainbreak daughter from a very good family line. Remains open. Sells with two straws of Monterey Freight Train B275.

Purchaser: _____ \$ _____